

GreenTek®

Trusted by the best in the game

THATCH-AWAY

MK3 OPERATOR'S MANUAL



INTRODUCTION

Thank you for purchasing the Thatch-Away Verticutting units.

These units incorporate many unique design features including Tungsten Carbide-tipped Fan Force blades and finned spacers to assist cutting discharge, a parking position for the reel rollers to protect your blade tips when the units are not in use, a universal unit design which can be quickly converted to fit all popular greens mowers by changing only the fitting kit, and a swing-open chassis for rapid cassette changeover.

IMPORTANT

The universal unit design necessitates a wide range of fittings to cover all popular mower options. Please use this manual carefully and methodically to ensure you fit your Thatch-Away carefully to your particular greens mower.

Please follow this sequence:

- Unpack all boxes carefully and check you have the appropriate fitting kit – see pages 10-17 for the relevant page for your brand of greens mower.
- Height of cut calibration
- Attach fitting kit and units to greens mower – see pages 6-8 for relevant pages for your brand of greens mower

THATCH-AWAY

WARNING AND SAFETY CONSIDERATIONS

WARNING
AND SAFETY

THE PURPOSE OF SAFETY SYMBOLS IS TO ATTRACT YOUR ATTENTION TO POSSIBLE DANGERS.
THE SAFETY SYMBOLS, AND THEIR EXPLANATIONS WITH THEM, DESERVE YOUR CAREFUL ATTENTION AND UNDERSTANDING.
THE SAFETY WARNINGS DO NOT BY THEMSELVES ELIMINATE ANY DANGER .
THE INSTRUCTIONS OR WARNINGS THEY GIVE ARE NOT SUBSTITUTES FOR PROPER ACCIDENT PREVENTION MEASURES.



DANGER: Failure to obey a safety warning will result in serious injury to yourself or to others. Always follow the safety precautions to reduce the risk of personal injury.



WARNING: Failure to obey a safety warning can result in injury to yourself or to others.



CAUTION: Failure to obey a safety warning may result in equipment damage.



CAUTION: Always abide by the mower manufacturer's safety guides when operating this equipment.



WARNING: Thrown objects and loud noise can cause severe eye injury and hearing loss. Wear eye and ear protection when operating this equipment.



WARNING: Do not attempt to physically handle the cutter blades when they are in rotation. Always switch off the power source and allow time for the cutter blades to slow down and stop.



WARNING: Do not attempt to set cutter blades when they are in rotation. Always switch off the power source and allow time for the cutter blades to stop.



WARNING: Do not operate this equipment without suitable protective clothing. Keep away from rotating blades. Thrown objects and rotating cutter can cause severe injury.

NOTE: Advises you of information or instructions vital to the operation or maintenance of this equipment.

GreenTek[®]

Trusted by the best in the game

Tel: +44 (0)113 267 7000

Email: info@greentek.uk.com

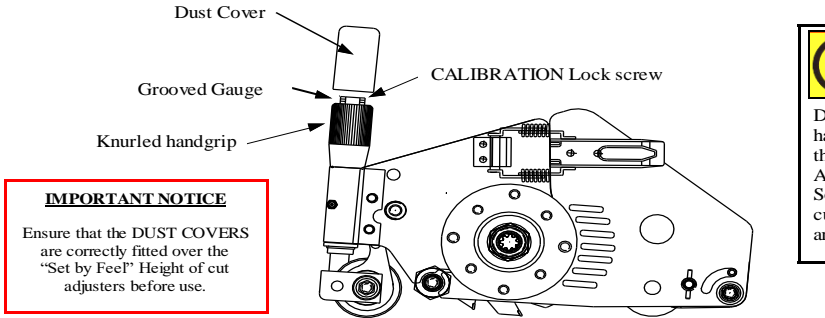
Web: www.greentek.uk.com

THATCH-AWAY

“SET BY FEEL” HEIGHT OF CUT ADJUSTERS

Thatch-Away SUPER-SYSTEM have their “Set by Feel” Height of cut adjusters pre-set at the factory and do not normally need re setting. If for any reason you do need to re set them, use the following procedure.

CALIBRATION OF CUTTING HEIGHT ADJUSTERS

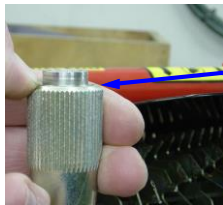


IMPORTANT NOTICE
Ensure that the DUST COVERS are correctly fitted over the “Set by Feel” Height of cut adjusters before use.

WARNING:
Do not attempt to physically handle the cutter blades when they are in rotation. Always switch off the power Source and allow time for the cutter blades to slow Down and stop.

MASTER SETTING POINTS

There are two master setting points (A and B below) which indicate when the different types of cassettes are set at zero.



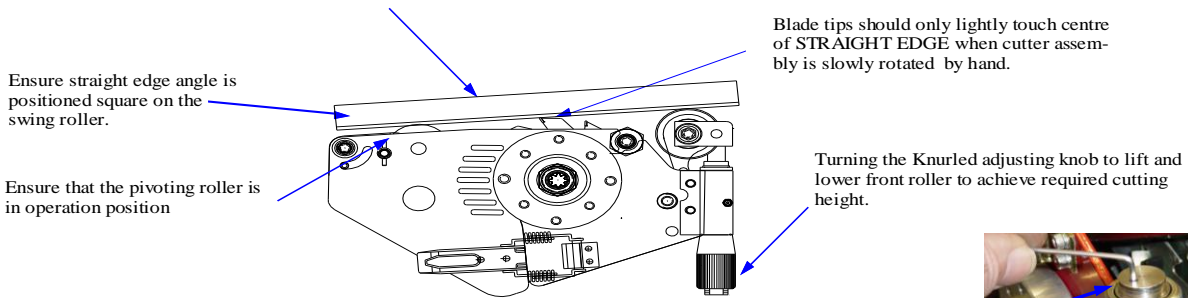
A. Stepped edge of Grooved gauge, correctly aligned with top face of Knurled handgrip.



B. TOP of the Grooved gauge level with the top face of the knurled adjusting knob.

HOW TO RE CALIBRATE YOUR HEIGHT OF CUT ADJUSTERS

1. Fit a Verticutting cassette into the chassis and turn upside down on the bench.
2. Using a straight edge (as shown) turn the knurled adjusters, up or down ,until both sides are level, and the blade tips are just touching the straight edge



3. Now turn the Thatch-Away unit back onto it’s rollers and slacken the Grooved Gauge locking screw.
4. Ensure the lock screw is loose and **turn** the stainless steel Grooved gauge until the lower stepped edge is aligned with the top face of the Knurled handgrip. Tighten the lock screw carefully making sure that the Grooved Gauge doesn’t turn at the same time.
5. **Ensure that the DUST COVERS are correctly fitted over the “Set by Feel” Height of cut adjusters before use.**



The” Set by Feel “ height of cut adjuster is now calibrated and your units are now set at zero.

THATCH-AWAY

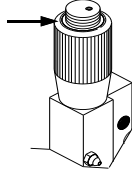
SETTING CUTTING DEPTH

CUTTING DEPTH & UNIT WEIGHTS

THATCH-AWAY HEIGHT OF CUT.

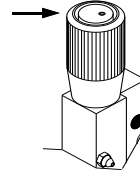
MASTER SETTING POINT A.

STEPPED EDGE of Grooved gauge, correctly aligned with top face of Knurled handgrip.



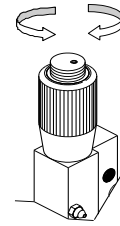
MASTER SETTING POINT B.

TOP of the Grooved gauge level with the top face of the knurled adjusting knob.



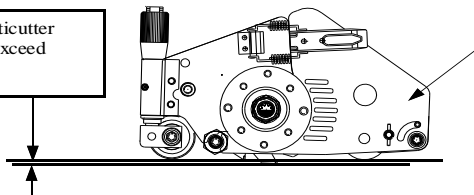
Turning the Knurled adjusting knob clockwise by one click, will lower the Thatch-Away into the green by 0.25 mm. (0.010")
 One full turn clockwise (4 clicks) is equal to **1.0 mm** into the green. (0.040")
1½ turns = 1/16"

Each groove on the gauge visible below the master setting point shows how many mm into the ground the attachment is working



One Click = 0.25 mm.
 (0.010")
 1½ Turns = 1/16"

NOTE: Cutting height for Verticutter should not Normally exceed Negative 4 mm depth.



Unit in working

THATCH-AWAY IS NOW SET TO THE REQUIRED CUTTING HEIGHT. THATCH-AWAY CAN NOW BE MOUNTED ON TO THE MOWER.
NOTE: IT IS ALWAYS ADVISABLE TO TAKE A TEST CUT OVER THE TURF SURFACE TO ENSURE THAT THE CUTTING HEIGHT IS PRECISE BEFORE PROCEEDING.

CAUTION:

When mounting "THATCH-AWAY SUPA" ensure that the correct mounting kits are used. Incorrect kit fittings may damage this equipment. Refer to "adapter kit layouts", for a full detail description of model kit numbers.

CASSETTE WEIGHTS

Verticutter cassette	10.6 kg.	(23.3 lb)
Groomer cassette	8.6 kg.	(18.9 lb)
Scarifier cassette	8.6 kg.	(18.9 lb)
Deep slicer cassette	7.6 kg.	(16.7 lb)
Sarel Roller cassette	29.8 kg.	(65.5 lb)
Star Slitter cassette	23.6 kg.	(51.9 lb)
Rotary Brush (Black) cassette	6.7 kg.	(14.7 lb)
Rotary Brush (Blue) cassette	6.7 kg.	(14.7 lb)
Top Dressing Brush cassette	10.0 kg.	(22.0 lb)

THATCH-AWAY

BLADE PROTECTION SYSTEM

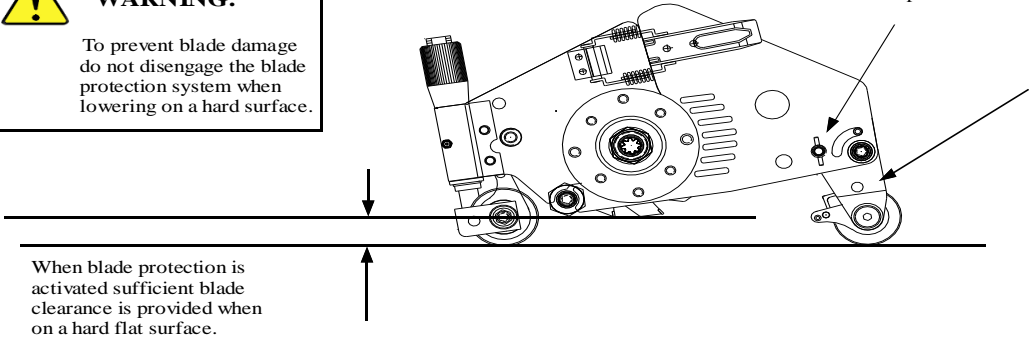
BLADE PROTECTION SYSTEM

TO ACTIVATE THE BLADE PROTECTION PULL OUT LATCH PIN AND TURN TO HORIZONTAL THEN PULL REAR ROLLER YOKE DOWN AND BACK BEFORE RETURNING THE RINGS TO THEIR VERTICAL POSITION IN ORDER TO LOCK THE YOKE IN FULLY BACK POSITION

- NOTE:** When the rear roller Yoke is locked back the cutting blades are clear of the parking surface and it is safe to lower the units.
- NOTE:** Ensure that the swing roller Lock is activated before THATCH-AWAY is lowered for storage.

WARNING:
To prevent blade damage do not disengage the blade protection system when lowering on a hard surface.

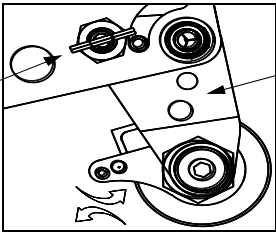
To activate the blade protection, Pull out latch pins and turn to the horizontal, then pull rear roller yoke down and back before returning the rings to their vertical to lock the yoke in position.



When blade protection is activated sufficient blade clearance is provided when on a hard flat surface.

LOCKING AND UNLOCKING THE REAR ROLLER YOKE

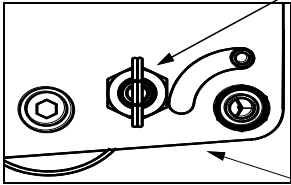
TO UNLOCK THE YOKE
Pull and turn latch ring to the horizontal to allow the yoke to be moved to the



Rear Roller Yoke will pivot without locking in any position and should not be kept in this position

NOTE: When the rear roller Yoke is locked forward the cutting blades must always be on a turf surface when lowered.

TO LOCK THE YOKE
Pull and turn latch pins to the vertical to lock the yoke in the desired position



THATCH-AWAY IN CUTTING POSITION

Rear Roller Yoke is now inside the frame and locked in cutting position

**TORO FITTING KIT TO SUIT ALL MODELS
FROM GM3-3250.**
FITTING INSTRUCTIONS

FITTING INSTRUCTIONS

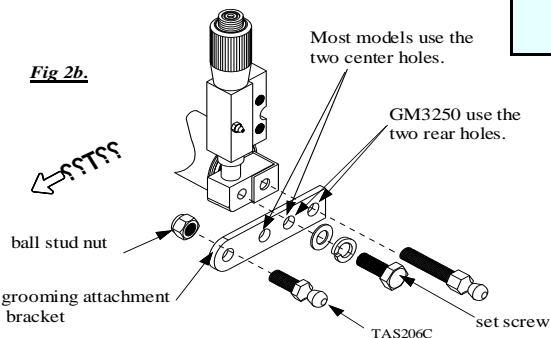
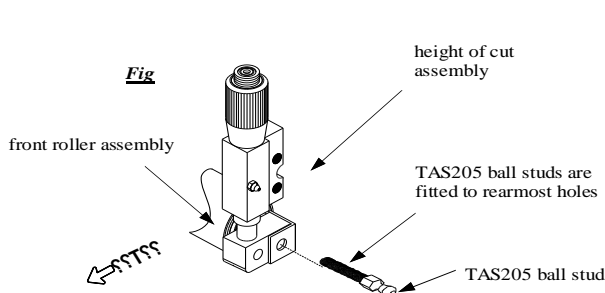
FITTING INSTRUCTIONS

1. All Models

Attach lifting U bolts to units.

2a. TORO GM3-3100 without groomers

Ensure the ball studs with long threads TAS205 are fitted to rearmost holes in the cutting height adjusters. Fit Thatch-Aways to greens mower and attach hydraulic motors in usual way.

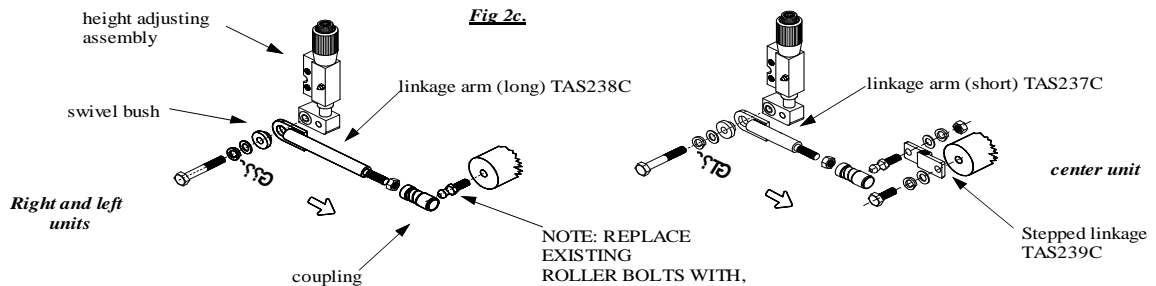


2b. TORO GM 3-3100 with groomers

Where greens mowing units are equipped with groomer attachments, fit extension brackets to Thatch-Aways, see [fig. 2b](#). Models GM3-3100 attach brackets to cutting height adjusters using center two holes. Fit units to greensmower and attach hydraulic motors in usual way.

2c. TORO GM 3200 1996-98 type

Remove 9/16" head bolts fitted to outside edges of the Toro's carrier rollers and replace with short threaded ball studs (TAS206C). The center unit also requires the use of stepped linkages TAS239C [see fig 2c](#). Attach long linkage arms TAS238C to right and left units, and short linkage arms TAS237C to center unit as shown. Fit units to greensmower and attach hydraulic motors in usual way.



2d. TORO GM 3200 1999 type and GM3250 without groomers

Fit short threaded ball studs TAS206C to front holes in cutting height adjusters (see item 4, page 10). Attach your Greensmowers linkage arms to these front ball studs and attach hydraulic motors in usual way.

2e. TORO GM 3200 1999 type and GM3250 with groomers

Where greens mowing units are equipped with groomer attachments, fit extension brackets to Thatch-Aways see [fig 2b](#). Attach brackets to cutting height adjusters using rearmost two holes. Fit units to greensmower and attach hydraulic motors in usual way.

Important Notes.

Toro GM3200 and 3250

These models have been sold by Toro with the hydraulic drive motor for the front right hand unit fitted to either the right or left hand ends of this unit. Accordingly, one unit of your set of Thatch-Aways will have drive splines in both ends of the cutter shaft. Motor adapter screws may be swapped to either end of this unit to suit the way your particular greensmower is configured.

THATCH-AWAY

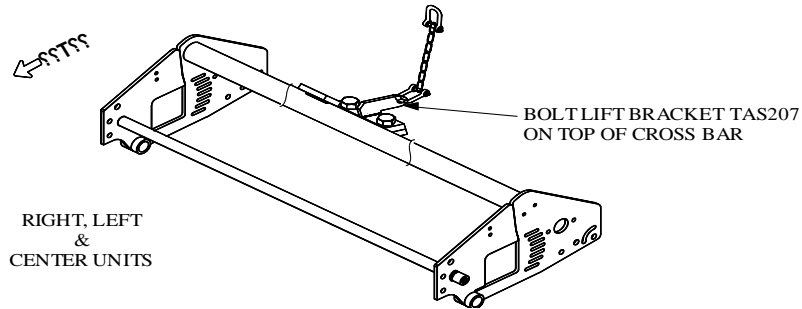
FITTING INSTRUCTIONS

JOHN DEERE 2243

FITTING

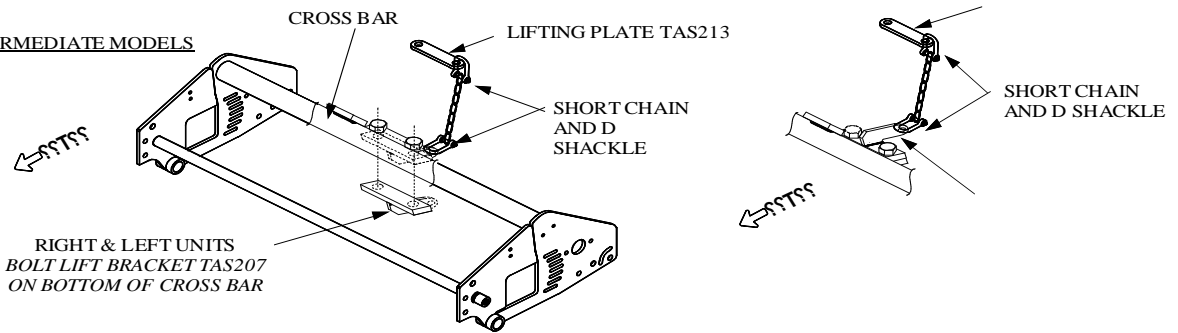
1. Attach lifting brackets to the units as shown, using the correct positions for your particular model of 2243 greensmower.
2. Fit Thatch-Aways to greens mower using existing JOHN DEERE Pull Frames.
3. Attach grassbox carrier frames from greens mowing units to the Thatch-Away units,
- 4a. **For early models** where rear of greens mowing units are suspended by a cable, fit lifting brackets TAS207 to the topside of the unit chassis flange and use the short chains and D shackles provided to attach the Thatch-Aways; to the lifting arm.

FOR EARLY MODELS

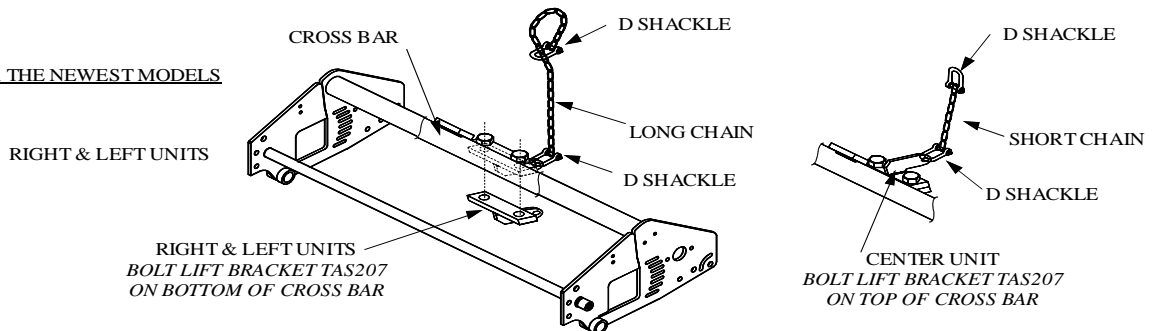


- 4b. **For intermediate models** where the rears of the front greens mowing units are suspended by bent metal rods that hook over the greensmowers lifting arms (which are made from square tube), fit lifting plate TAS213 to the underside of the bracket on the lifting arm. The rears of the front Thatch-Away units are then attached by using the short chains and D shackles provided to connect lifting brackets TAS207 (which are fitted to the underside of the flange on the unit chassis) to the lifting plate on the greensmower arm.

INTERMEDIATE MODELS




FOR THE NEWEST MODELS



THATCH-AWAY

FITTING ROTOR CASSETTE

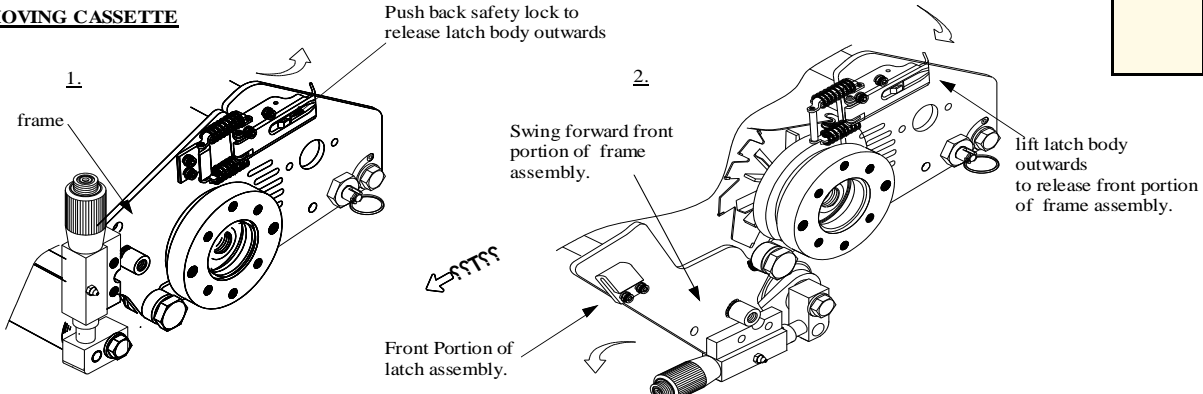
FITTING ROTOR CASSETTE



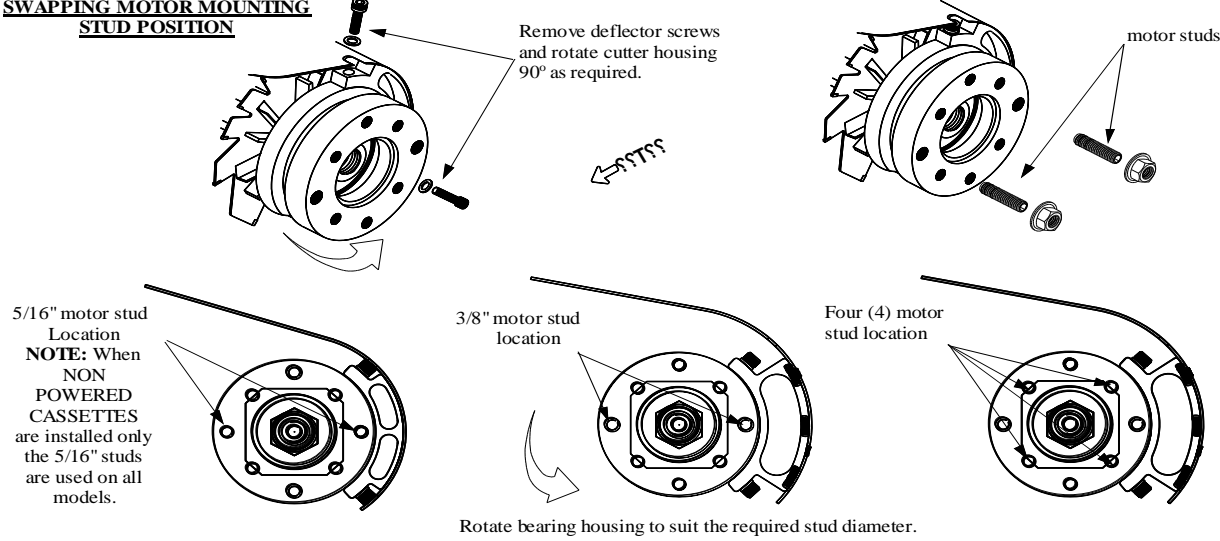
WARNING:

- : Before changing the cassette ensure that all hydraulic drive motors are removed
- : Before changing the cassette ensure that "Thatch-Away supa" is removed from the greensmower
- : Do not attempt this operation while engine is running.
- : Do not attempt to physically handle the cutter blades when they are in rotation.
- : Always switch off the power source and allow time for the cutter blades to slow down and stop.
- : Ensure that the frame is latched closed and safety locks are securely in lock position after rotor e is fitted.


REMOVING CASSETTE



SWAPPING MOTOR MOUNTING STUD POSITION

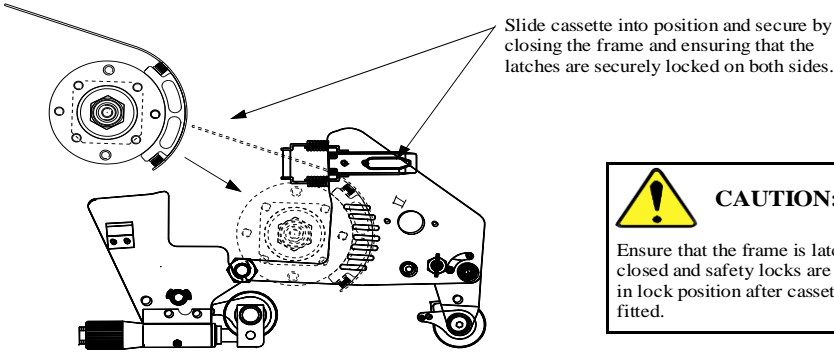



REFITTING CASSETTE



WARNING:

Do not attempt to physically handle the cutter blades when they are in rotation. Always switch off the power source and allow time for the cutter blades to slow down and stop.





CAUTION:

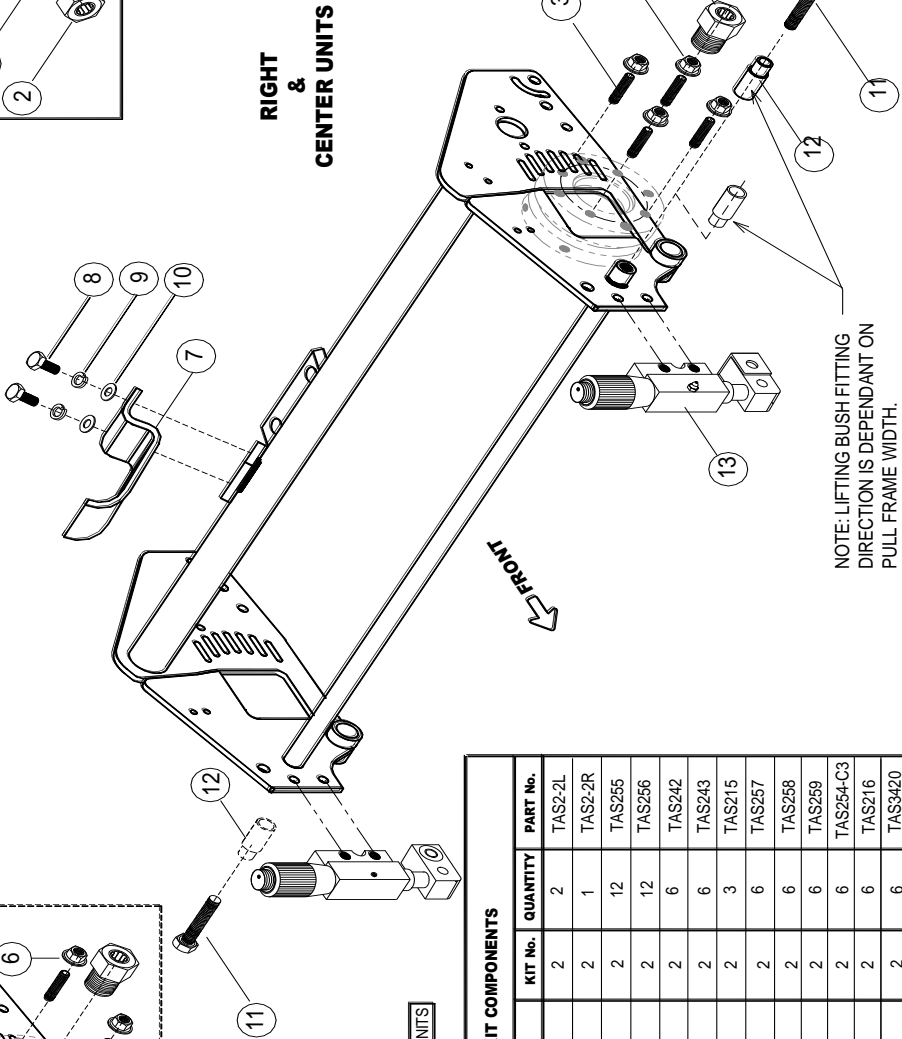
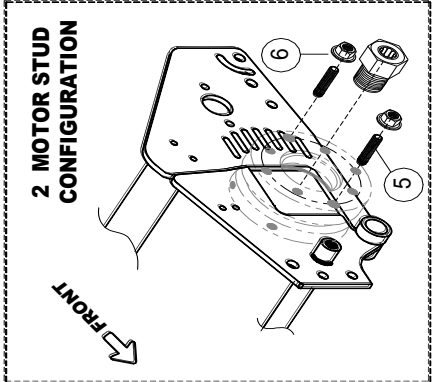
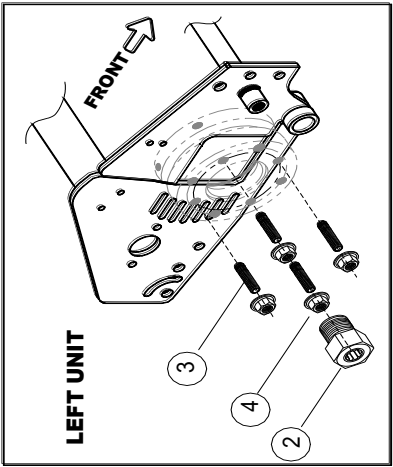
Ensure that the frame is latched closed and safety locks are securely in lock position after cassette is fitted.

THATCH-AWAY

Thatch-Away Supa

KIT 2.
CONFIGURATION
TO SUIT MODEL;
JACOBSEN GK4

KIT 2.
CONFIGURATION
JACOBSEN GK4



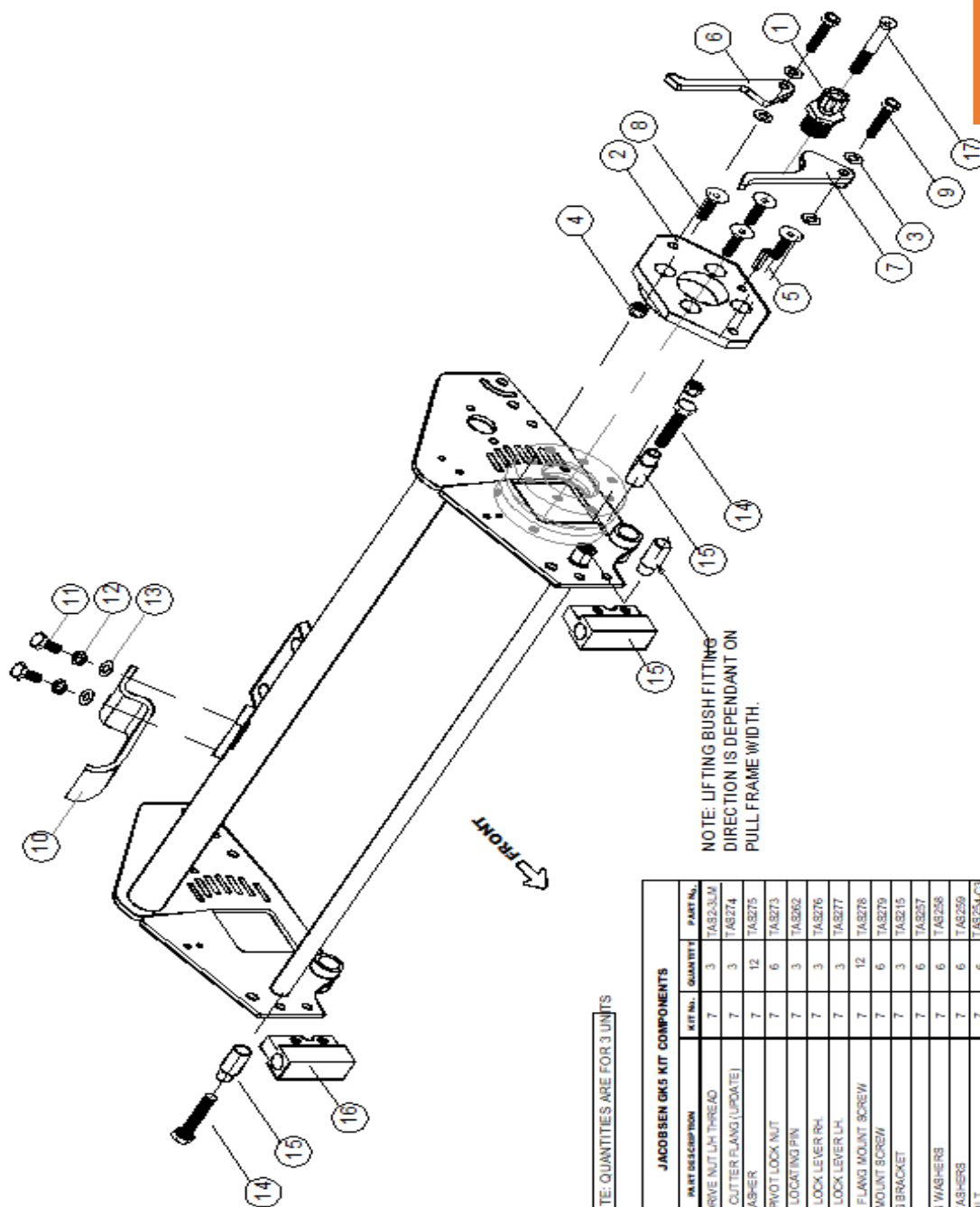
NOTE: QUANTITIES ARE FOR 3 UNITS

JACOBSEN GK4 KIT COMPONENTS			
No.	PART DESCRIPTION	KIT No.	QUANTITY
1	DRIVE NUT L/H THREAD	2	2
2	DRIVE NUT R/H THREAD	2	1
3	MOTOR ADAPTOR SCREW	2	12
4	MOTOR ADAPTOR FLANGE NUT	2	12
5	MOTOR ADAPTOR STUD	2	6
6	MOTOR ADAPTOR NUT	2	6
7	LIFTING BRACKET	2	3
8	BOLT	2	6
9	SPRING WASHERS	2	6
10	FLAT WASHERS	2	6
11	LIFT BOLT	2	6
12	LIFT BUSH	2	6
13	height of cut assembly (HOC)	2	6

Thatch-Away Supa

KIT 7.
CONFIGURATION
TO SUIT MODEL;
JACOBSEN GK 5
SERIES TAS2JAC5-250-

Jacobsen GK5



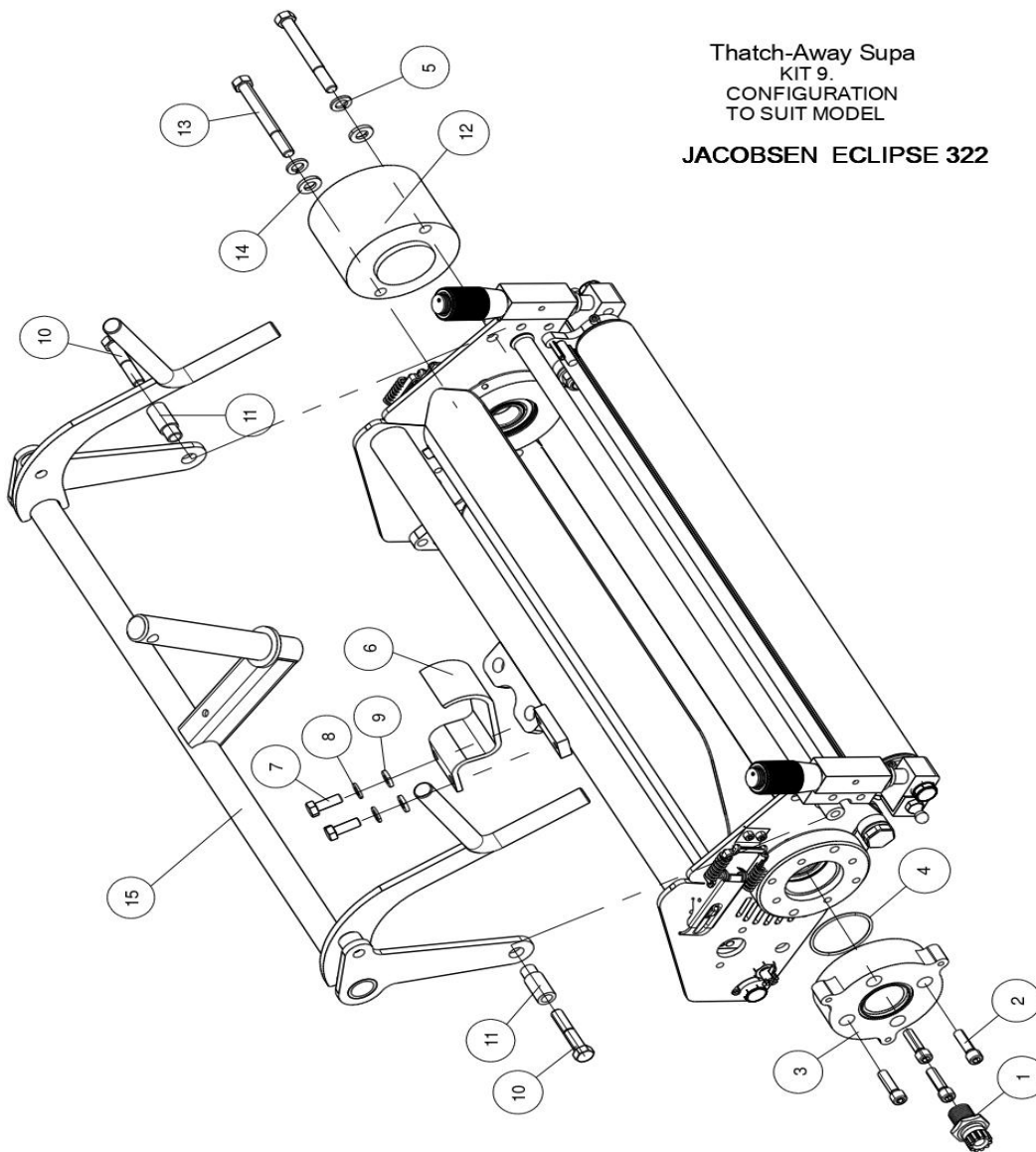
NOTE: QUANTITIES ARE FOR 3 UNITS

JACOBSEN GK5 KIT COMPONENTS			
Kit No.	Part Description	Quantity	Part No.
7	1. MALE DRIVE NUT LH THREAD	3	TAS2JLM
7	2. MOTOR CUTTER FLANG (UPDATE)	3	TAS274
7	3. BEW WASHER	12	TAS275
7	4. LEVER PIVOT LOCK NUT	6	TAS273
7	5. MOTOR LOCKING PIN	3	TAS262
7	6. MOTOR LOCK LEVER RH	3	TAS276
7	7. MOTOR LOCK LEVER LH	3	TAS277
7	8. MOTOR FLANG MOUNT SCREW	12	TAS278
7	9. LEVER MOUNT SCREW	6	TAS279
7	10. LIFTING BRACKET	3	TAS215
7	11. BOLT	6	TAS257
7	12. SPRING WASHERS	6	TAS258
7	13. FLAT WASHERS	6	TAS259
7	14. LIFT BOLT	6	TAS242
7	15. LIFT BUSH	6	TAS216
7	16. HEIGHT ADJUSTER BRACKET	6	TAS200
7	17. DRIVE NUT LOCK SCREW	3	TAS305

THATCH-AWAY

Thatch-Away Supa
KIT 9.
CONFIGURATION
TO SUIT MODEL
JACOBSEN ECLIPSE 322

Jacobsen Eclipse 322



NOTE: QUANTITIES ARE FOR 3 UNITS

JACOBSEN ECLIPSE 322			
No.	PART DESCRIPTION	KIT No. QUANTITY	PART No.
1	MALE DRIVE NUT/RH THREAD	3	TAS238RM
2	MOTOR INTERFACE SCREW	12	TAS3440
3	ECLIPSE MOTOR INTERFACE	3	TAS3441
4	ECLIPSE ORING	3	TAS3442
5	SPRING WASHER	6	TAS245
6	LIFTING BRACKET	3	TAS215
7	BOLT	6	TAS257
8	SPRING WASHERS	6	TA 5258
9	FLAT WASHER	6	TA 5259
10	LIFT BOLT	6	TAS254C3
11	LIFT BUSH	6	TAS216
12	COUNTERWEIGHT 75MM	3	TAS3443
13	COUNTERWEIGHT SCREW	6	TAS3444
14	FLAT WASHER	6	TAS246
15	PULL FRAME	3	TAS3474
16			

GreenTek

Trusted by the best in the game

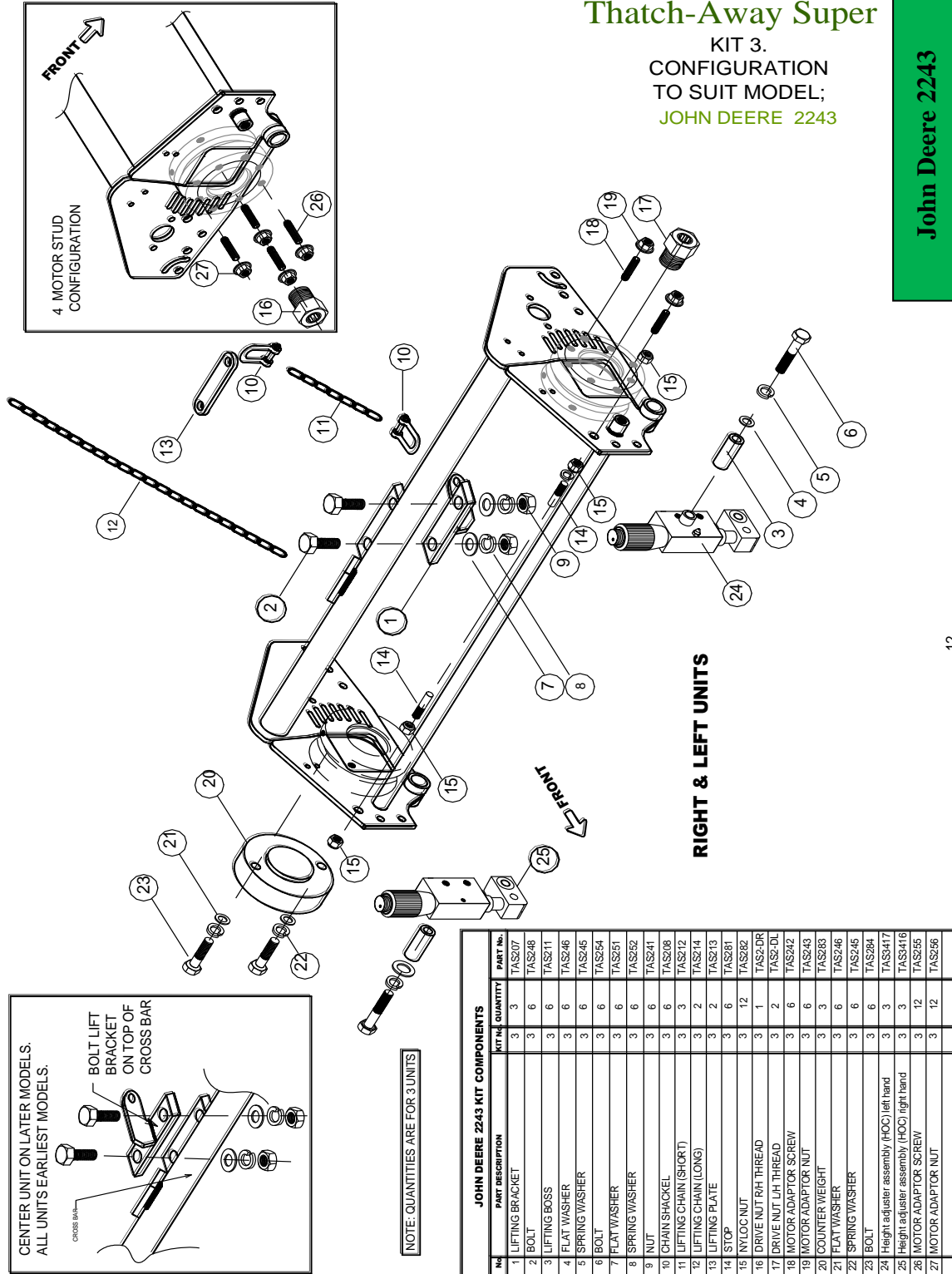
Tel: +44 (0)113 267 7000
Email: info@greentek.uk.com
Web: www.greentek.uk.com

THATCH-AWAY

Thatch-Away Super

KIT 3.
CONFIGURATION
TO SUIT MODEL;
JOHN DEERE 2243

John Deere 2243



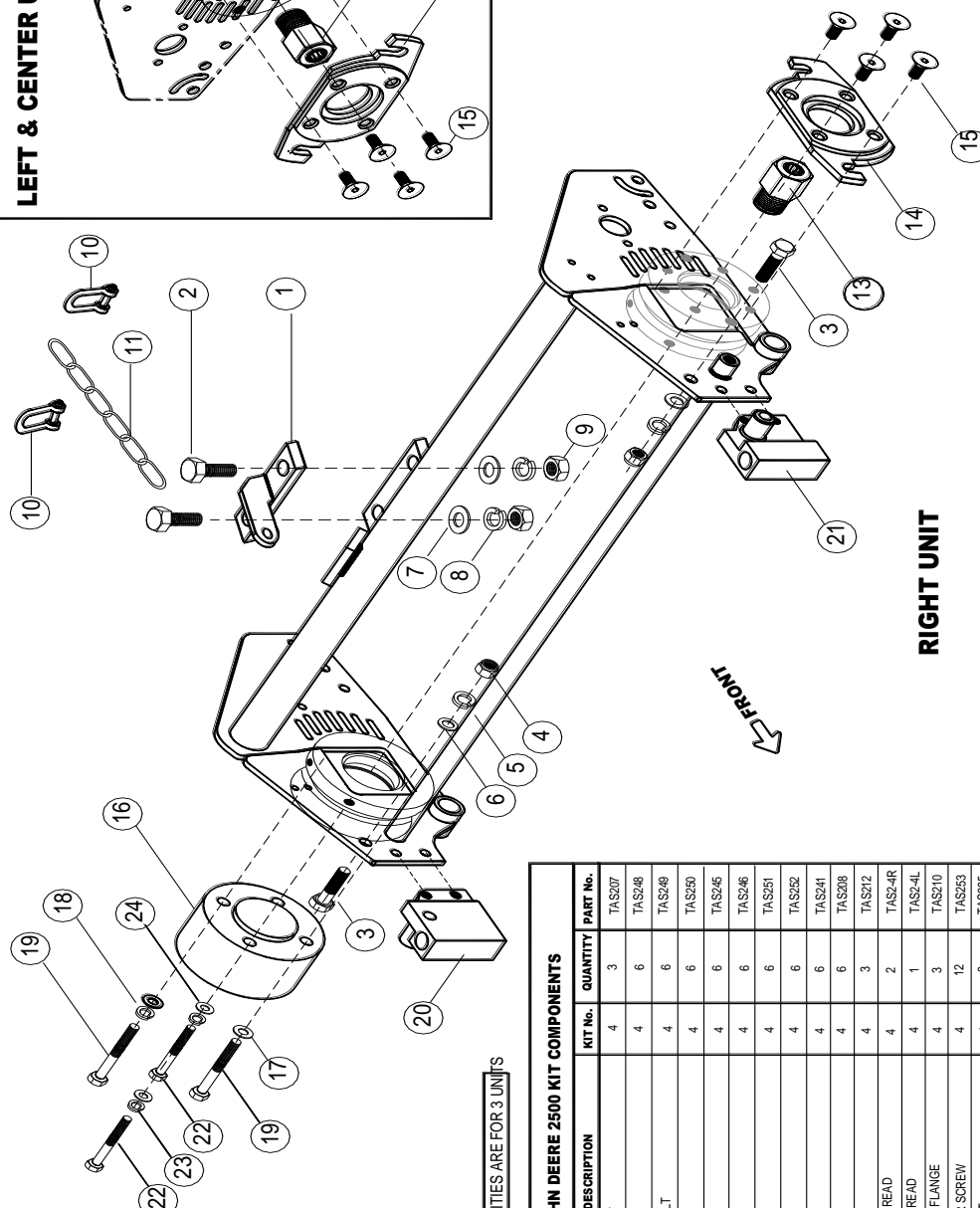
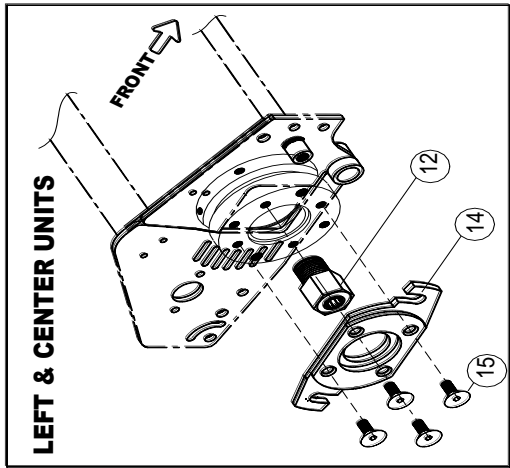
JOHN DEERE 2243 KIT COMPONENTS			
Kit No.	Part Description	Kit Qty	Part No.
1	LIFTING BRACKET	3	TAS207
2	BOLT	6	TAS248
3	LIFTING BOSS	3	TAS211
4	FLAT WASHER	3	TAS246
5	SPRING WASHER	3	TAS245
6	BOLT	3	TAS254
7	FLAT WASHER	3	TAS251
8	SPRING WASHER	3	TAS252
9	NUT	3	TAS241
10	CHAIN SHACKLE	3	TAS208
11	LIFTING CHAIN (SHORT)	3	TAS212
12	LIFTING CHAIN (LONG)	3	TAS214
13	LIFTING PLATE	3	TAS213
14	STOP	3	TAS281
15	INT.LOC.NUT	3	TAS282
16	DRIVE NUT R/H THREAD	3	TAS2DR
17	DRIVE NUT L/H THREAD	3	TAS2DL
18	MOTOR ADAPTOR SCREW	3	TAS242
19	MOTOR ADAPTOR NUT	3	TAS243
20	COUNTER WEIGHT	3	TAS283
21	FLAT WASHER	3	TAS246
22	SPRING WASHER	3	TAS245
23	BOLT	3	TAS254
24	Height adjuster assembly (HOC) left hand	3	TAS284
25	Height adjuster assembly (HOC) right hand	3	TAS3417
26	MOTOR ADAPTOR SCREW	3	TAS243
27	MOTOR ADAPTOR NUT	3	TAS242

THATCH-AWAY

Thatch-Away Super

KIT 4.
CONFIGURATION
TO SUIT MODEL;
JOHN DEERE 2500

John Deere 2500 A & B
(Pre QA units)

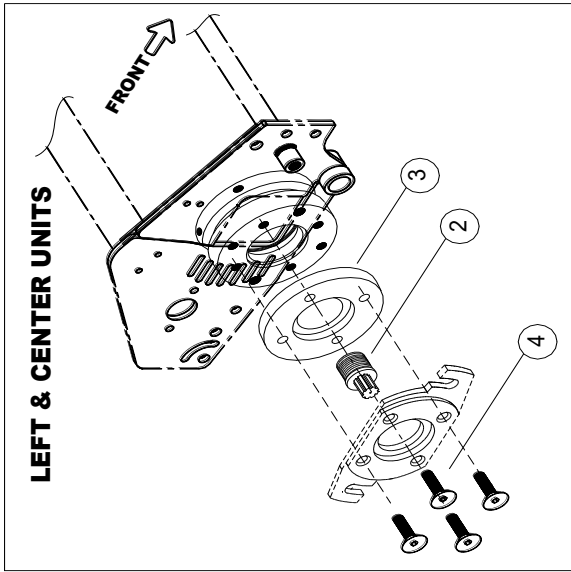


RIGHT UNIT

NOTE: QUANTITIES ARE FOR 3 UNITS

JOHN DEERE 2500 KIT COMPONENTS			
No.	PART DESCRIPTION	KIT No.	QUANTITY PART No.
1	LIFTING BRACKET	4	3 TAS207
2	BOLT	4	6 TAS248
3	LIFTING YOKE BOLT	4	6 TAS249
4	NUT	4	6 TAS250
5	SPRING WASHER	4	6 TAS246
6	FLAT WASHER	4	6 TAS246
7	FLAT WASHER	4	6 TAS251
8	SPRING WASHER	4	6 TAS252
9	NUT	4	6 TAS241
10	CHAIN SHACKLE	4	6 TAS208
11	LIFTING CHAIN	4	3 TAS212
12	DRIVE NUT RHT THREAD	4	2 TAS24R
13	DRIVE NUT LHT THREAD	4	1 TAS24L
14	MOTOR ADAPTOR FLANGE	4	3 TAS210
15	FLANGE ADAPTOR SCREW	4	12 TAS253
16	COUNTER WEIGHT	4	3 TAS285
17	FLAT WASHER	4	6 TAS246
18	SPRING WASHER	4	6 TAS245
19	BOLT	4	6 TAS286
20	RIGHT HAND HEIGHT ADJUSTING BRACKET	4	3 TAS204
21	LEFT HAND HEIGHT ADJUSTING BRACKET	4	3 TAS203
22	BOLT	4	6 TAS288
23	SPRING WASHER	4	6 TAS288
24	FLAT WASHER	4	6 TAS290

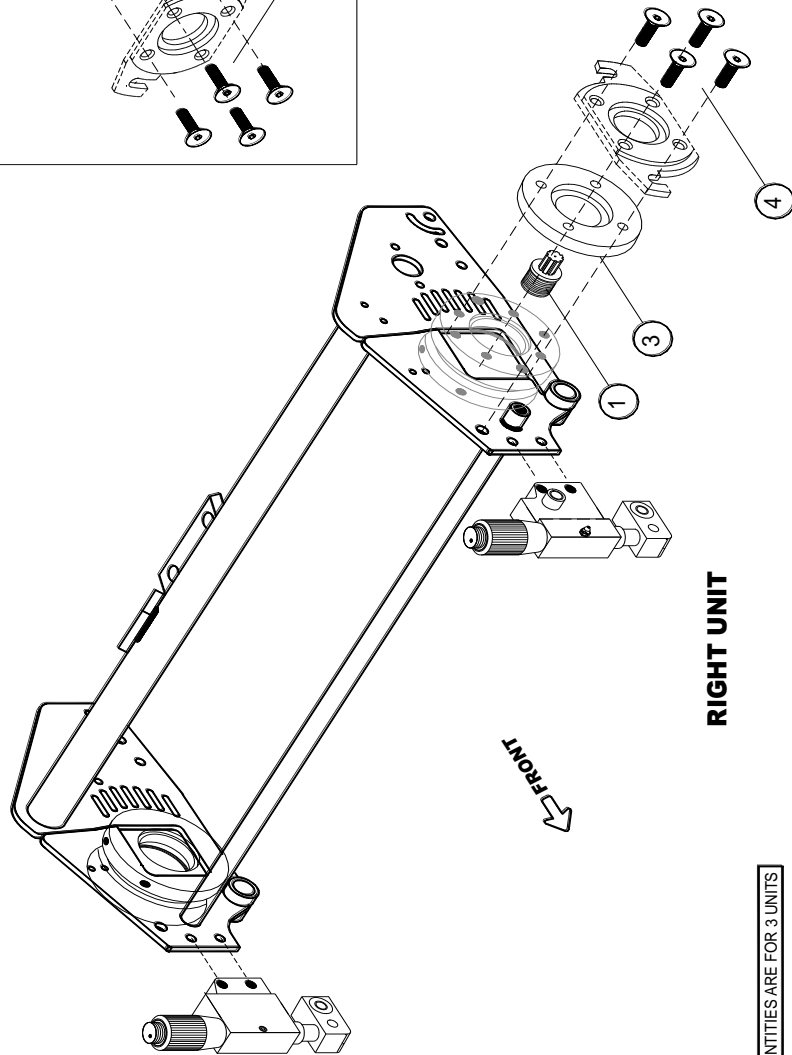
THATCH-AWAY



Thatch-Away Super

KIT 4E.
CONFIGURATION
TO SUIT MODEL;
John Deere 2500 ELECTRIC

John Deere 2500E
(Pre QA Units)



RIGHT UNIT

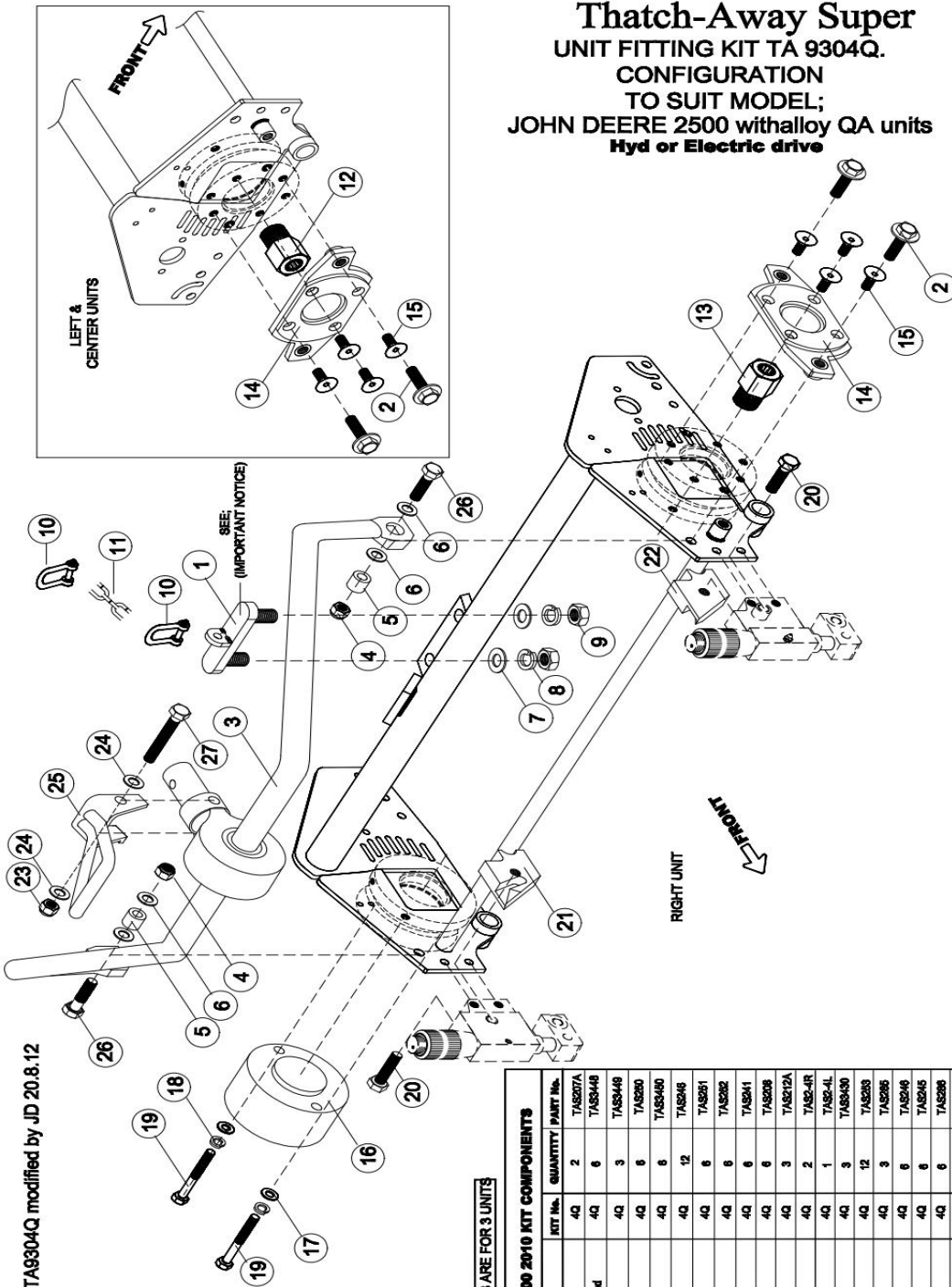
NOTE: QUANTITIES ARE FOR 3 UNITS

TA9404E to fit John Deere 2500 ELECTRIC KIT COMPONENTS			
No.	PART DESCRIPTION	KIT No.	QUANTITY
1	LH DRIVE NUT (MALE)	4E	3
2	R/H DRIVE NUTS (MALE)	4E	6
3	SPACERS	4E	3
4	COUNTERSUNK SCREW 11/4" LONG	4E	12

THATCH-AWAY

Thatch-Away Super UNIT FITTING KIT TA 9304Q. CONFIGURATION TO SUIT MODEL; JOHN DEERE 2500 with alloy QA units Hyd or Electric drive

JD 2500B/2550/2750
(With QA5 Units)



Drawing file name :TA9304Q modified by JD 20.8.12
Modified by JD 20.8.12

IMPORTANT NOTICE
Use
TAS207 Lift Bracket
on the
Rear unit only.

NOTE: QUANTITIES ARE FOR 3 UNITS

No.	PART DESCRIPTION	KIT No.	QUANTITY	PART No.
1	LIFTING BRACKET	4Q	2	TAS207A
2	MOTOR MOUNT BOLT M10 x 30 Flanged	4Q	6	TAS9448
3	PULL FRAME	4Q	3	TAS9448
4	NYLOC NUT	4Q	6	TAS9200
5	BUSH	4Q	6	TAS9340
6	FLAT WASHER	4Q	12	TAS206
7	FLAT WASHER	4Q	6	TAS201
8	SPRING WASHER	4Q	6	TAS202
9	NUT	4Q	6	TAS204
10	CHAIN SHACKLE	4Q	6	TAS208
11	LIFTING CHAIN	4Q	3	TAS212A
12	DRIVE NUT RH THREAD	4Q	2	TAS2-4R
13	DRIVE NUT LH THREAD	4Q	1	TAS2-4L
14	MOTOR ADAPTOR FLANGE	4Q	3	TAS2430
15	FLANGE ADAPTOR SCREW	4Q	12	TAS203
16	COUNTER WEIGHT	4Q	3	TAS205
17	FLAT WASHER	4Q	6	TAS246
18	SPRING WASHER	4Q	6	TAS245
19	BOLT 3/8" x 2 1/2" UNF	4Q	6	TAS206
20	BOLT M10 x 30	4Q	3	TAS2451
21	GRASS BOX MOUNT RIGHT HAND	4Q	6	TAS2431
22	GRASS BOX MOUNT LEFT HAND	4Q	3	TAS2432
23	NYLOC NUT M10	4Q	3	TAS2432
24	FLAT WASHER M10	4Q	6	TAS2448
25	GRASS BOX HANGER	4Q	3	TAS2433
26	BOLT PULL FRAME BOLT	4Q	6	TAS249
27	BOLT, GRASS BOX HANGER: M10 x 70	4Q	3	TAS2444

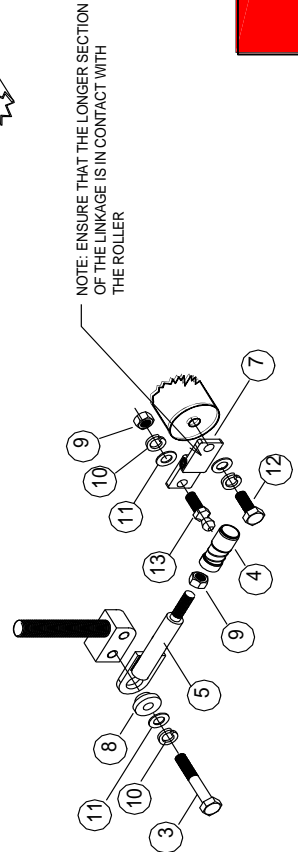
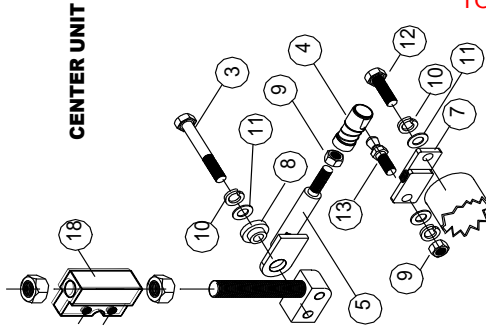
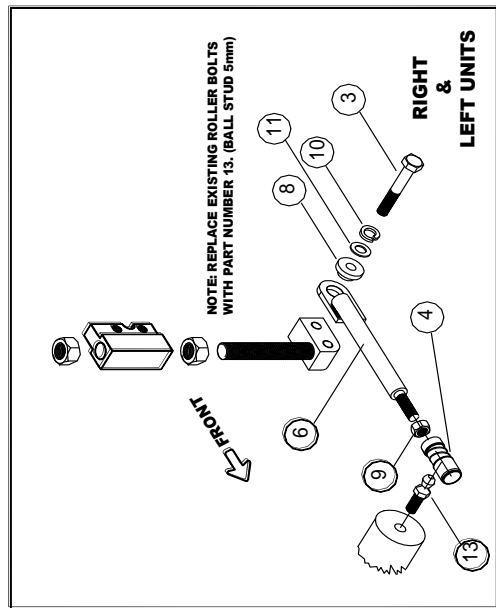
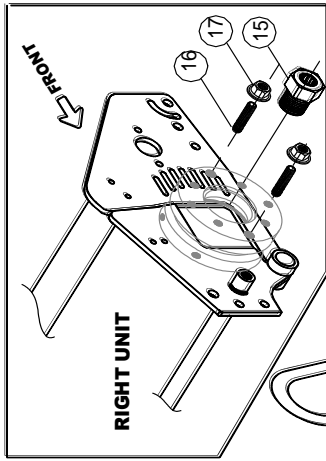
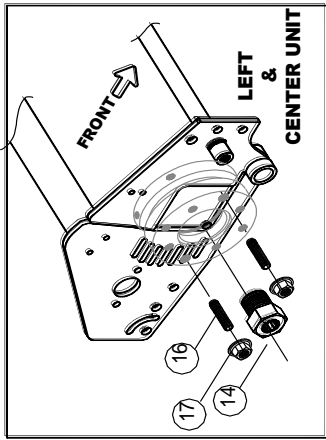
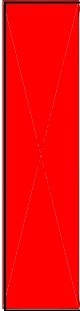
REFER TO OPERATOR AND SPARE PARTS MANUAL
FOR DETAIL FITTING INSTRUCTIONS.

13 A INSERT

THATCH-AWAY

Thatch-Away Super

KIT 6.
CONFIGURATION
TO SUIT MODEL:
TORO 3200 (96-98).



NOTE: QUANTITIES ARE FOR 3 UNITS

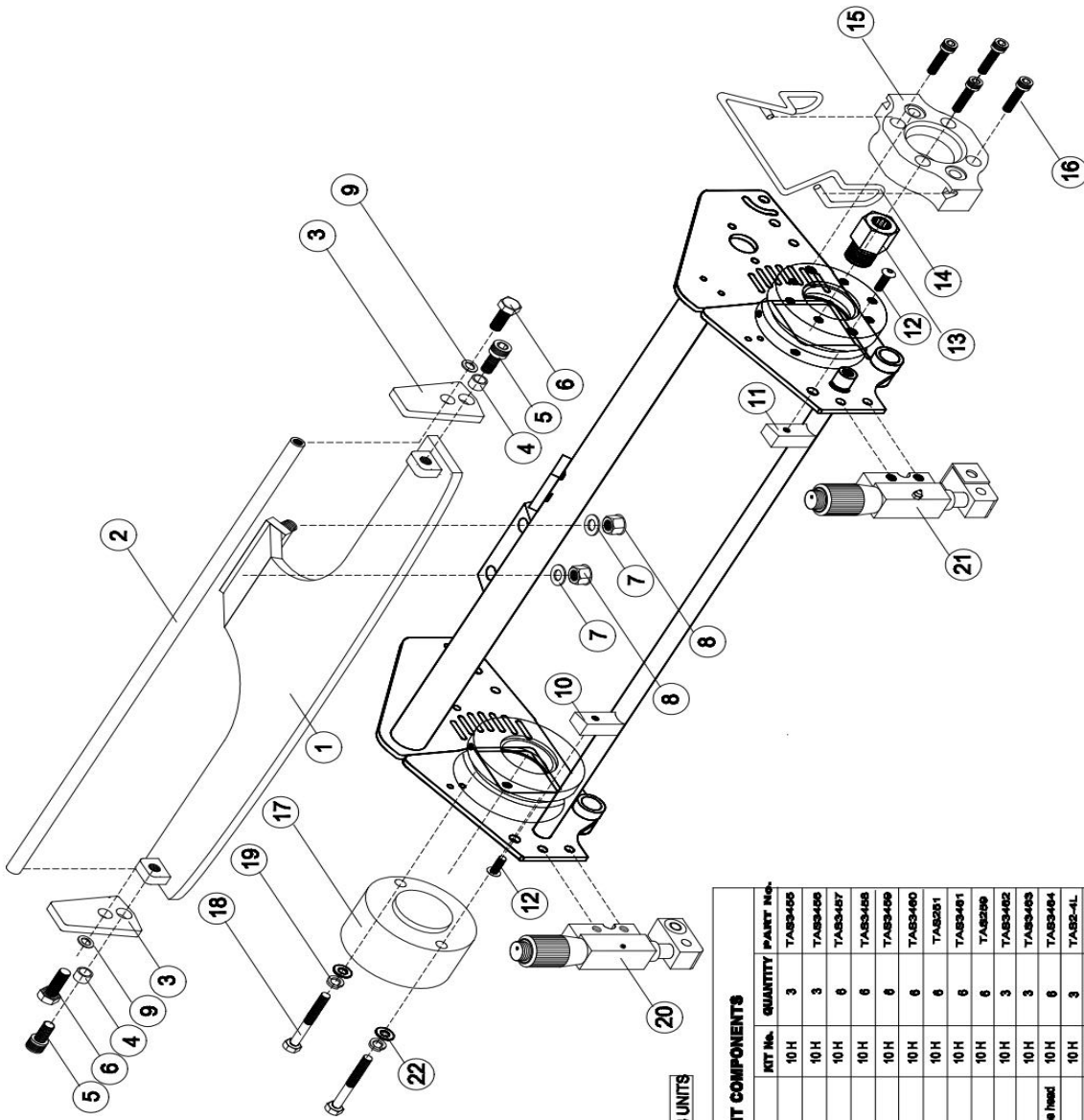
TORO 3200 (96-98) KIT COMPONENTS			
No.	PART DESCRIPTION	KIT No.	QUANTITY
1	LIFTING U-BOLT	6	3
2	NUT	6	12
3	BOLT	6	6
4	COUPLINK	6	6
5	LINKAGE ARM SHORT	6	2
6	LINKAGE ARM LONG	6	4
7	FLAT LINKAGE	6	2
8	SWIVEL BUSH	6	6
9	NUT	6	6
10	SPRING WASHER	6	10
11	FLAT WASHER	6	2
12	REPLACEMENT BOLT	6	2
13	BALL STUD 5mm	6	6
14	DRIVE NUT R/H THREAD	6	2
15	DRIVE NUT L/H THREAD	6	1
16	MOTOR ADAPTOR SCREW	6	6
17	MOTOR ADAPTOR FLANGE NUT	6	6
18	HEIGHT ADJUSTER BRACKET	6	6

THATCH-AWAY

Thatch-Away Supa

KIT 10H.
CONFIGURATION
TO SUIT MODEL;
TORO T3400

Toro Tri Flex 3400



NOTE: QUANTITIES ARE FOR 3 UNITS

TORO TA0310H KIT COMPONENTS			
Qty.	PART DESCRIPTION	KIT No.	QUANTITY PART No.
1	LIFT FRAME	10H	3 TA03405
2	LIFT ROD	10H	3 TA03406
3	LIFT PLATE	10H	6 TA03407
4	LIFT PLATE BUSH	10H	6 TA03408
5	CAP HEAD SCREW M10 x 20	10H	6 TA03409
6	HEX HEAD SCREW M8 x 20	10H	6 TA03460
7	FLAT WASHER 1/2"	10H	6 TA03081
8	NYLOC NUT M12	10H	6 TA03481
9	FLAT WASHER 5/16"	10H	6 TA03099
10	GRASS BOX STOP RIGHT HAND	10H	3 TA03482
11	GRASS BOX STOP LEFT HAND	10H	3 TA03483
12	GRASS BOX STOP SCREW M6 x 16 Dome head	10H	6 TA03484
13	DRIVE NUT LH THREAD	10H	3 TA03485
14	MOTOR BALL	10H	3 TA03405
15	MOTOR FLANGE HOUSING	10H	3 TA03406
16	MOTOR FLANGE CAP SCREW 5/16" x 1 1/4" UNC	10H	12 TA03440
17	COUNTER WEIGHT	10H	3 TAB 206
18	WEIGHT BOLT 3/8" x 2 1/2" UNC	10H	6 TAB 206
19	SPRING WASHER 3/8"	10H	6 TAB245
20	Height adjuster assembly (RHC) right hand	10H	3 TAB0418
21	Height adjuster assembly (LHC) left hand	10H	3 TAB0419
22	FLAT WASHER 3/8"	10H	6 TAB046

16 B INSERT

GreenTek

Trusted by the best in the game

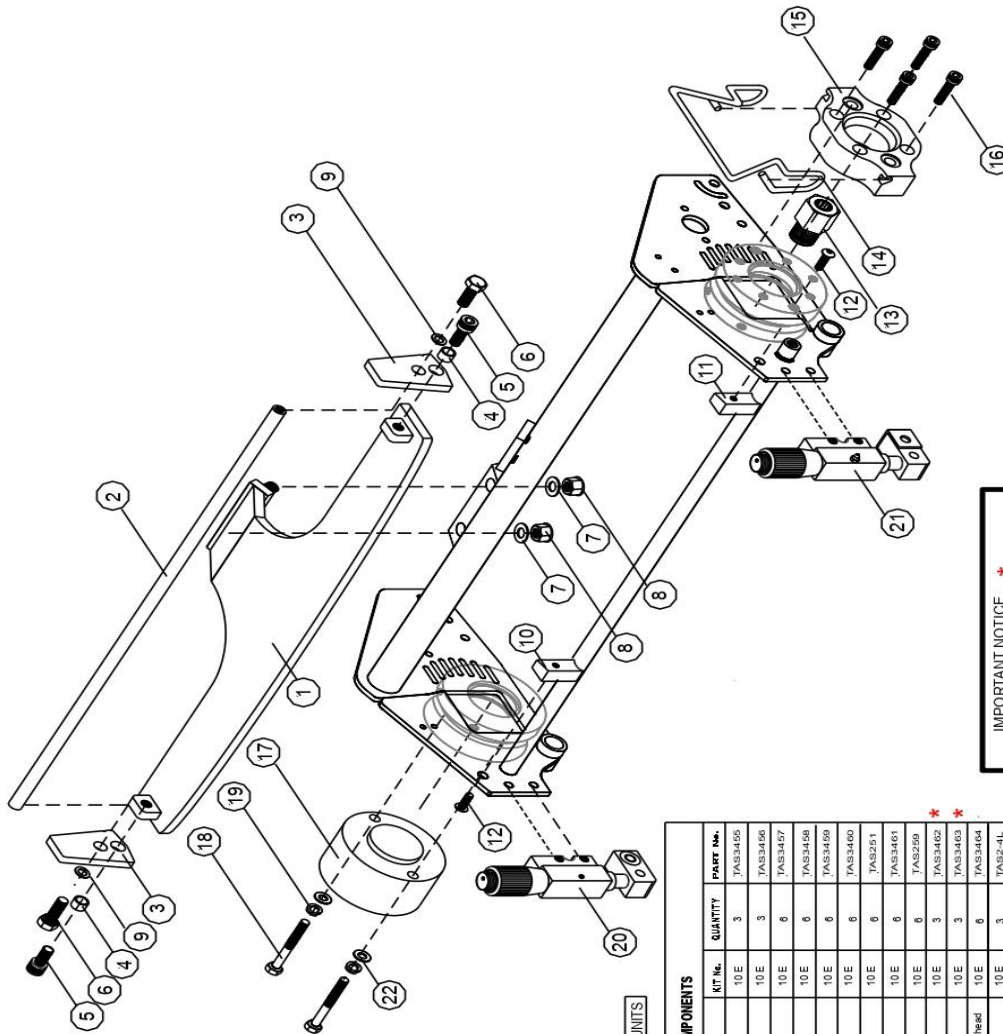
Tel: +44 (0)113 267 7000
 Email: info@greentek.uk.com
 Web: www.greentek.uk.com

THATCH-AWAY

Thatch-Away Supa

KIT 10E.
CONFIGURATION
TO SUIT MODEL;
TORO T3420

KIT 10E
CONFIGURATION
TORO T3420



IMPORTANT NOTICE *
When fitting Top Dressing Brushes, it is necessary to remove items 10 & 11, and insure that these items are refitted when Top Dressing Brushes are removed.

NOTE: QUANTITIES ARE FOR 3 UNITS

TORO TA9310E KIT COMPONENTS			
No.	PART DESCRIPTION	KIT No.	QUANTITY
1	LIFT FRAME	10E	3
2	LIFT ROD	10E	3
3	LIFT PLATE	10E	6
4	LIFT PLATE BUSH	10E	6
5	CAP HEAD SCREW M10 x 20	10E	6
6	HEX. HEAD SCREW M8 x 20	10E	6
7	FLAT WASHER 1/2"	10E	6
8	NYLOC NUT M12	10E	6
9	FLAT WASHER 5/16"	10E	6
10	GRASS BOX STOP RIGHT HAND	10E	3
11	GRASS BOX STOP LEFT HAND	10E	3
12	GRASS BOX STOP SCREW M6 x 18 Dome Head	10E	3
13	DRIVE NUT LH THREAD	10E	3
14	MOTOR BALL	10E	3
15	MOTOR FLANGE HOUSING	10E	3
16	MOTOR FLANGE CAP SCREW 5/16" x 1 1/4" UNC	10E	12
17	COUNTER WEIGHT	10E	3
18	WEIGHT BOLT 3/8" x 3 1/2" unc	10E	6
19	SPRING WASHER 3/8"	10E	6
20	Height adjuster assembly (HOC) right hand	10E	3
21	Height adjuster assembly (HOC) left hand	10E	3
22	FLAT WASHER 3/8"	10E	6

16 A INSERT

GreenTek

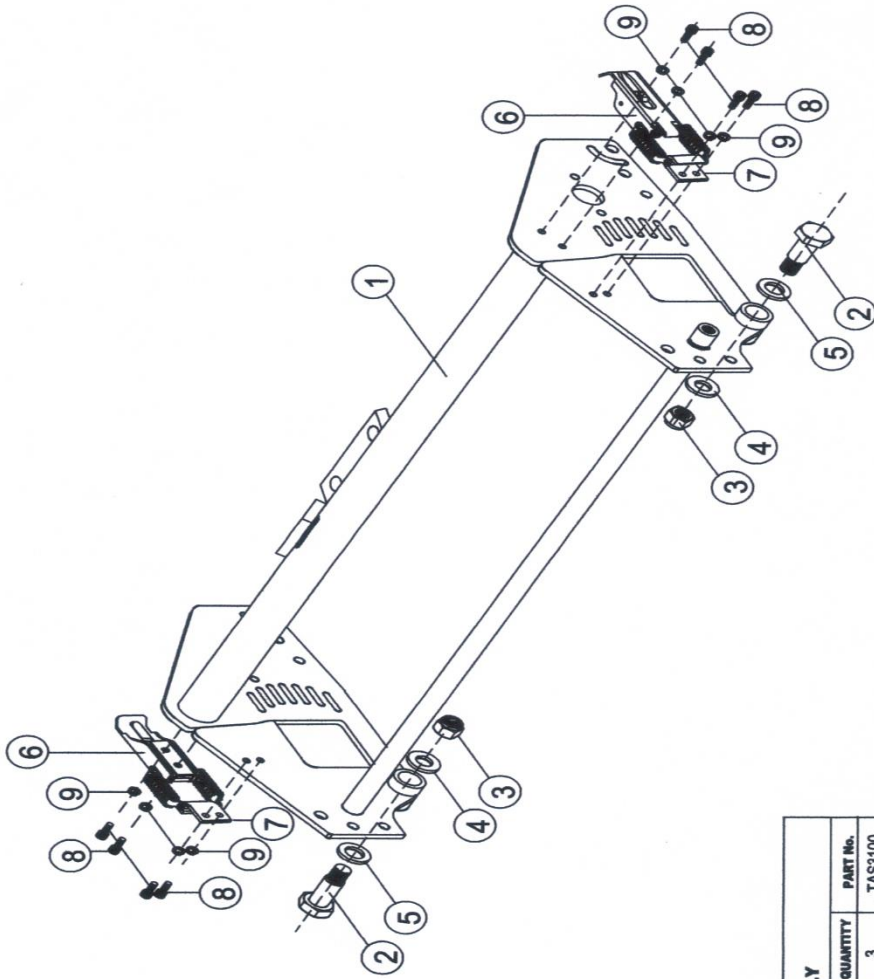
Trusted by the best in the game

Tel: +44 (0)113 267 7000
Email: info@greentek.uk.com
Web: www.greentek.uk.com

THATCH-AWAY

Thatch-Away Supa SPLIT FRAME ASSEMBLY ASSEMBLY SPECIFICATIONS & PARTS LISTING

SPLIT FRAME
ASSEMBLY



NOTE: QUANTITIES ARE FOR 3 UNITS

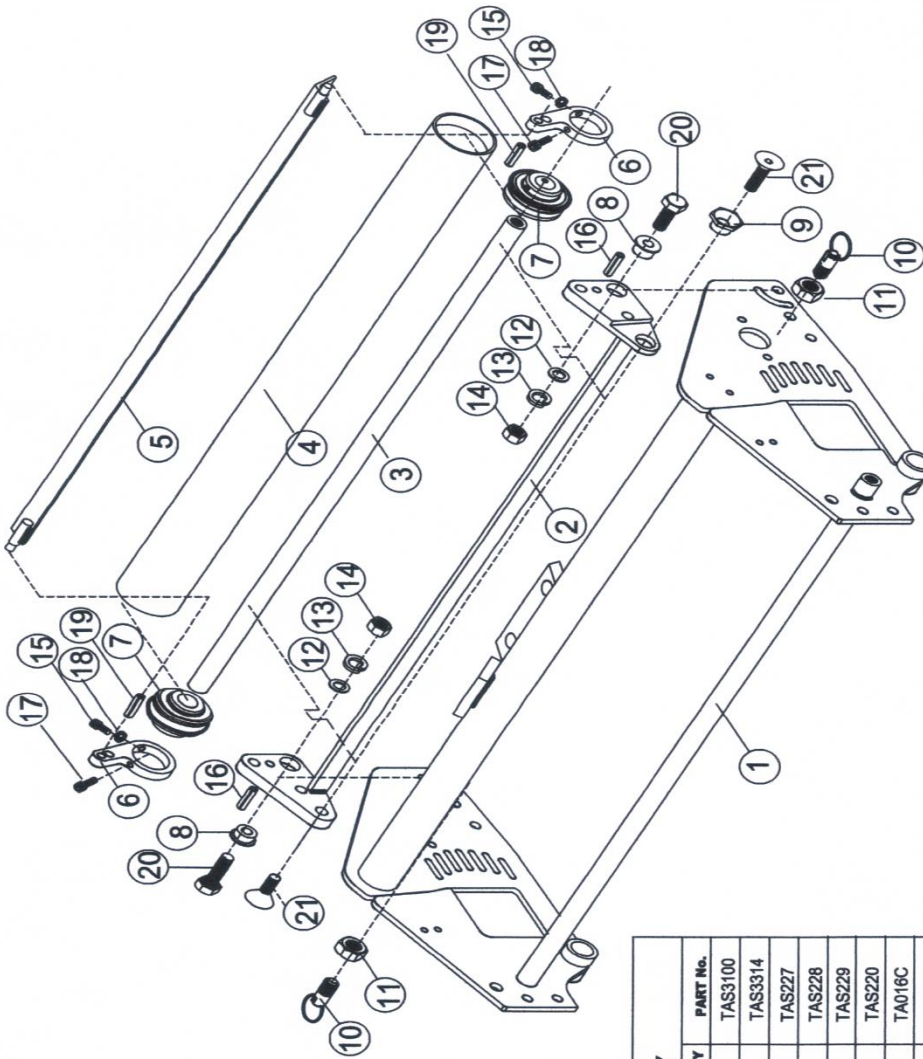
SPLIT FRAME ASSEMBLY				
No.	PART DESCRIPTION	KIT#	QUANTITY	PART No.
1	STANDARD FRAME		3	TAS3100
2	HINGE BOLT		6	TAS3306
3	NUT		6	TAS3307
4	INNER HINGE WASHER		6	TAS3308
5	OUTER HINGE WASHER		6	TAS3309
6	LATCH		6	TAS3310
7	STRIKER PLATE		6	TAS3311
8	LATCH SCREW		8	TAS3312
9	SPRING WASHER		8	TAS3313
10				
11				

THATCH-AWAY

Thatch-Away Supa

REAR ROLLER ASSEMBLY ASSEMBLY SPECIFICATIONS & PARTS LISTING

REAR ROLLER
ASSEMBLY



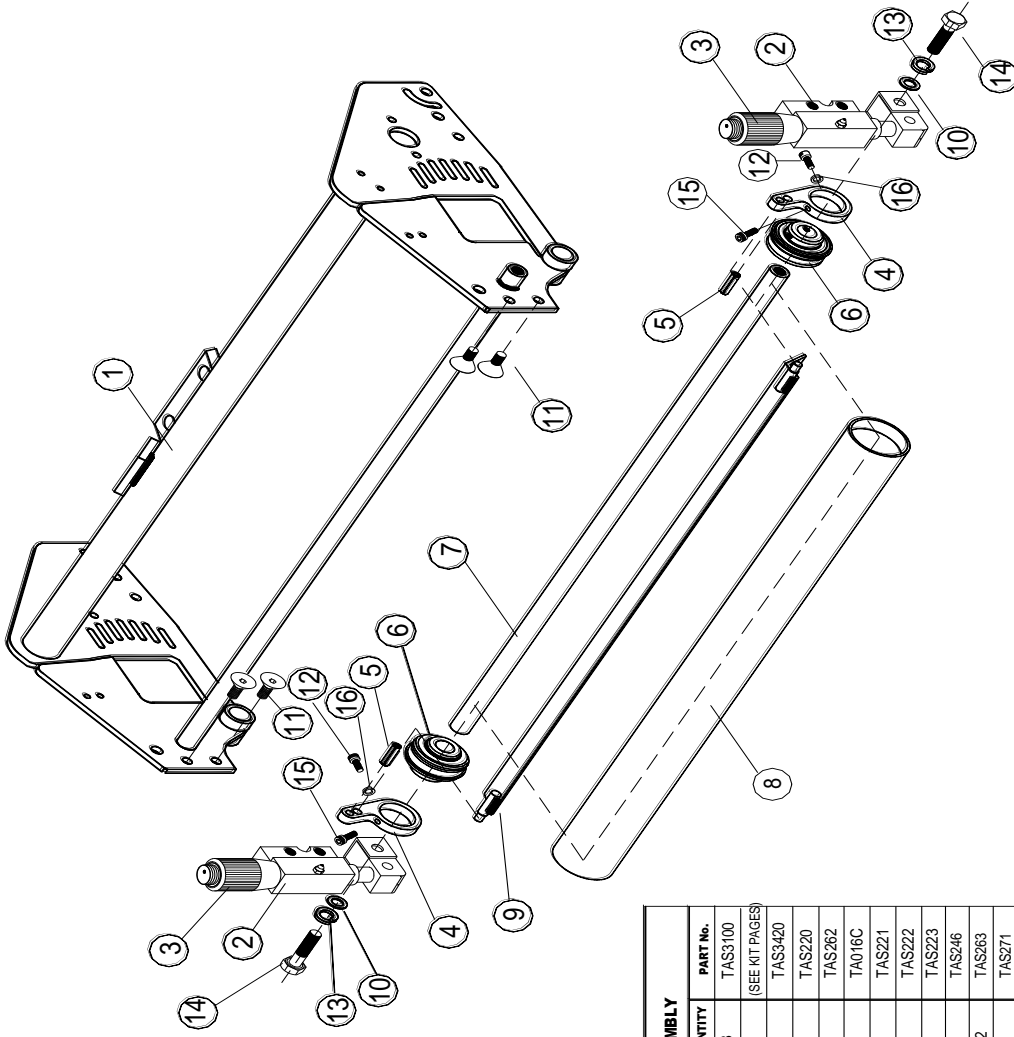
Note, TAS228 is the roller tube only. Complete rear roller assembly is available, part no TAS3427

NOTE: QUANTITIES ARE FOR 3 UNITS

PIVOTING ROLLER ASSEMBLY			
No.	PART DESCRIPTION	KIT #	QUANTITY
1	STANDARD FRAME	TAS3100	3
2	PIVOTING YOKE	TAS3314	3
3	REAR ROLLER SHAFT	TAS227	3
4	REAR ROLLER	TAS228	3
5	REAR SCRAPER ANGLE	TAS229	3
6	SCRAPER MOUNT PLATE	TAS220	6
7	ROLLER BEARING	TA016C	6
8	YOKE PIVOT BUSH	TAS231	6
9	ECCENTRIC LEVELING BUSH	TAS3315	3
10	YOKE PIVOT LOCK ASSEMBLY	TAS233	6
11	LATCH LOCK NUT	TAS270	6
12	FLAT WASHER	TAS246	6
13	SPRING WASHER	TAS245	6
14	NUT	TAS244	6
15	SCRAPER / BEARING CAP SCREW	TAS271	6
16	PIVOT STOP PIN	TAS3317	6
17	SCRAPER LOCKING SCREW	TAS266	6
18	SPRING WASHER	TAS267	6
19	SCRAPER STOP	TAS262	6
20	PIVOT BOLT	TAS247	6
21	COUNTERSUNK SCREW	TAS3318	6

Thatch-Away Supa

FRONT ROLLER ASSEMBLY ASSEMBLY SPECIFICATIONS & PARTS LISTING



Note, TAS222 is the roller tube only. Complete rear roller assembly is available, part no TAS3426

NOTE: QUANTITIES ARE FOR 3 UNITS

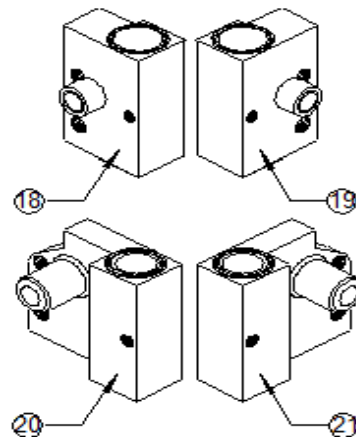
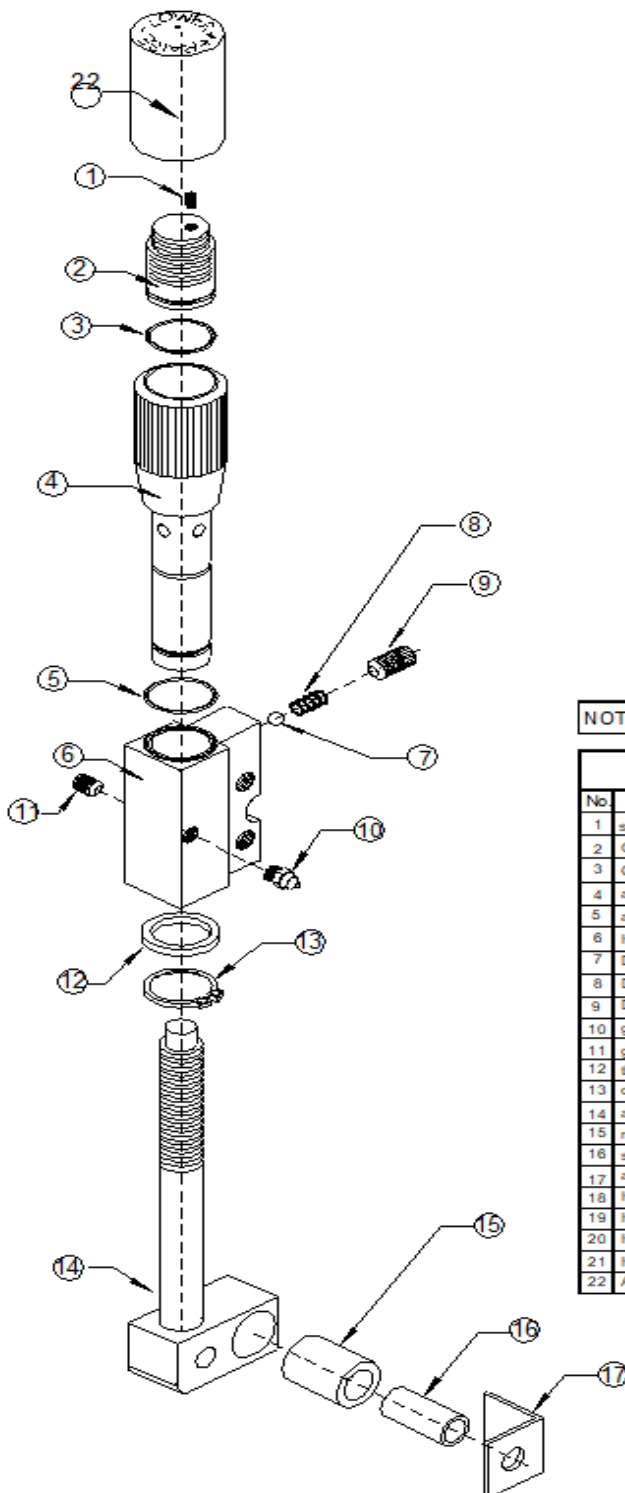
ADJUSTING FRONT ROLLER ASSEMBLY			
No.	PART DESCRIPTION	KIT#	QUANTITY
1	STANDARD FRAME	TAS3100	3
2	ADJUSTING HOUSING BRACKET	*	6
3	CUTTING HEIGHT ADJUSTER ASSEMBLY	(SEE KIT PAGES)	6
4	SCRAPER MOUNT PLATE	TAS3420	6
5	SCRAPER STOP	TAS220	6
6	ROLLER BEARING	TAS262	6
7	FRONT ROLLER SHAFT	TA016C	3
8	FRONT ROLLER	TAS221	3
9	FRONT SCRAPER ANGLE	TAS222	3
10	FLAT WASHER	TAS223	3
11	BRACKET MOUNT SCREW	TAS246	2
12	SCRAPER / BEARING CAP SCREW	TAS263	12
13	SPRING WASHER	TAS271	6
14	ROLLER MOUNT BOLT	TAS245	6
15	SCRAPER LOCKING SCREW	TAS249	6
16	SPRING WASHER	TAS266	6
		TAS267	12



THATCH-AWAY

Thatch-Away Supa "SET BY FEEL" height adjusters CONFIGURATION TO SUIT MODEL ALL MODEL'S

"SET BY FEEL" height adjusters
CONFIGURATION
TO SUIT ALL MODEL'S

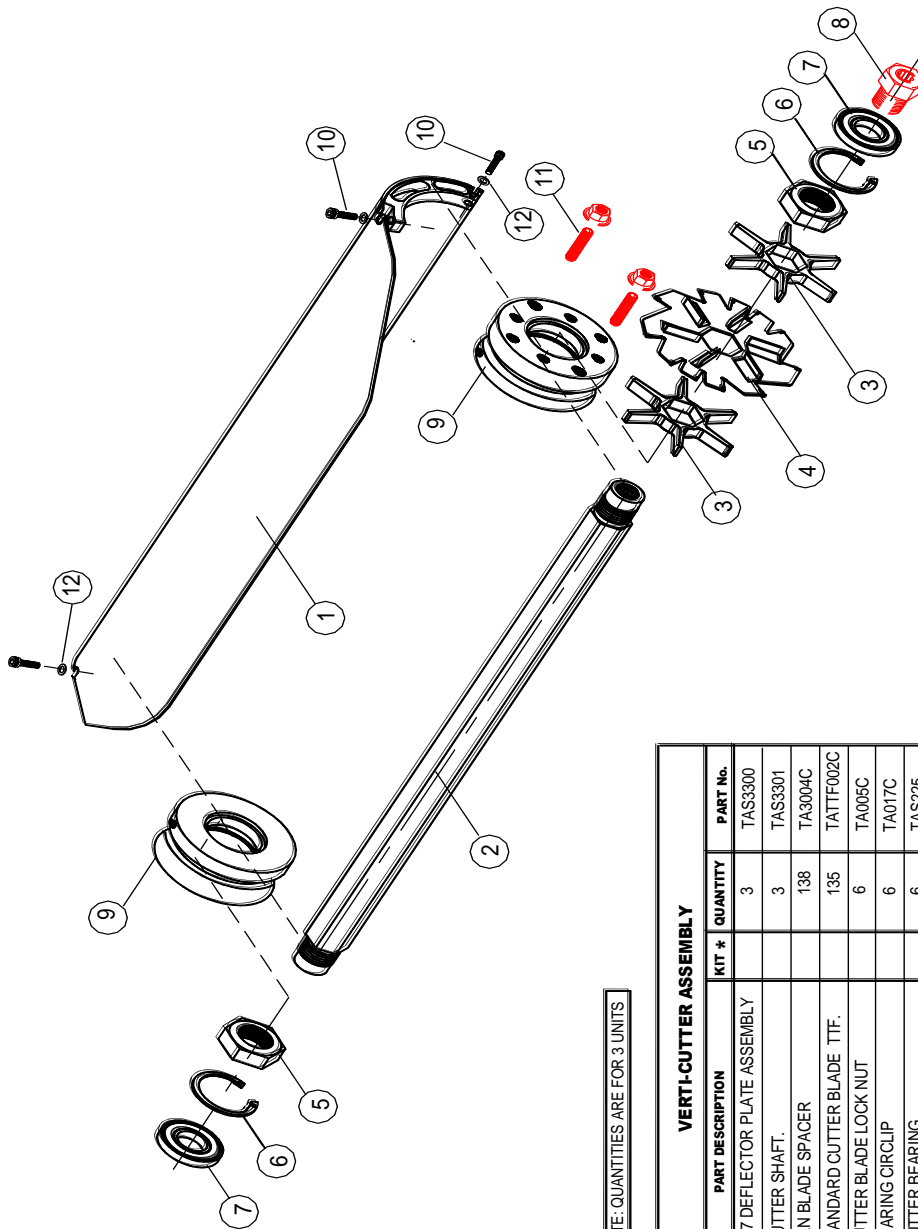


NOTE: QUANTITIES ARE FOR 3 UNITS

"SET BY FEEL" HEIGHT OF CUT ADJUSTER COMPONENTS			
No.	PART DESCRIPTION	QUANTITY	PART No.
1	set screw		TAS3398
2	Grooved Gauge		TAS3399
3	O ring		TAS3400
4	adjustment knob		TAS3401
5	adjustment knob O ring		TAS3402
6	Height adjuster mount block		TAS3403
7	Detent ball		TAS3404
8	Detent spring		TAS3405
9	Detent lock screw		TAS3406
10	grease nipple		TAS3407
11	grease nipple plug		TAS3408
12	thrust washer		TAS3409
13	circlip		TAS3410
14	adjustment arm		TAS3411
15	rubber bush		TAS3412
16	steel bush		TAS3413
17	angle stop		TAS3414
18	Height adjuster mount block john deere 2243 right hand		TAS3421
19	Height adjuster mount block john deere 2243 left hand		TAS3422
20	Height adjuster mount block john deere 2500 right hand		TAS3423
21	Height adjuster mount block john deere 2500 left hand		TAS3424
22	Adjuster Dust Cover		TAS3425

Thatch-Away supa VERTICUTTER CASSETTE ASSEMBLY SPECIFICATIONS & PARTS LISTING

VERTICUTTER ASSEMBLY

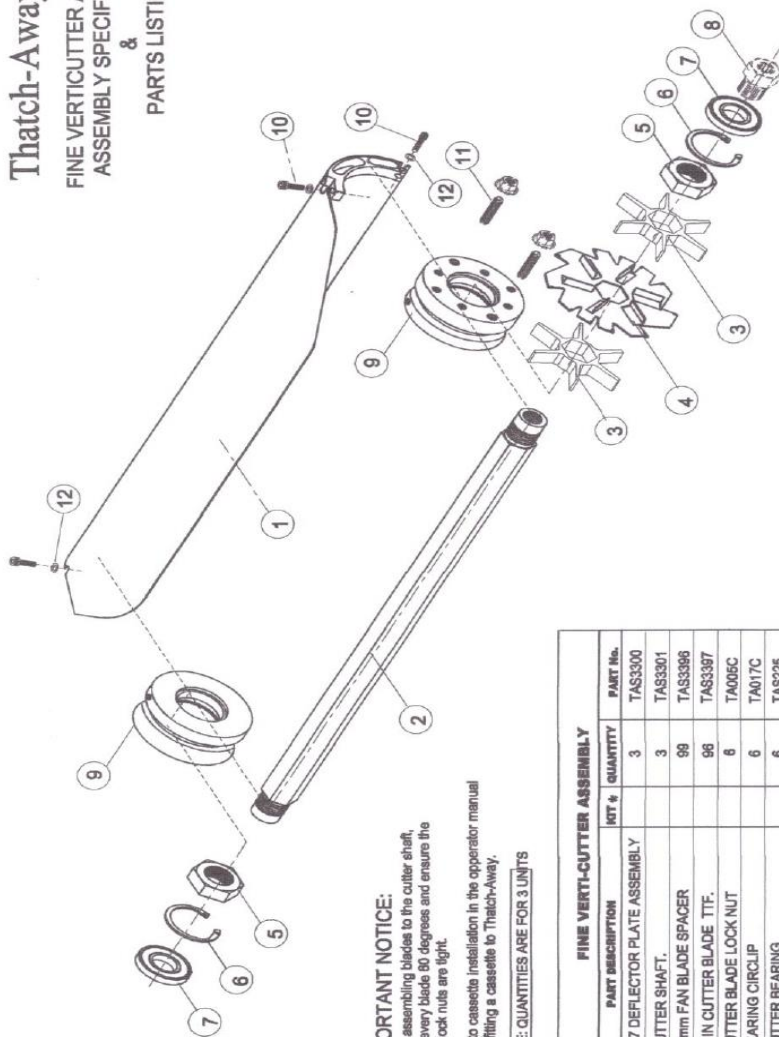


NOTE: QUANTITIES ARE FOR 3 UNITS

VERTI-CUTTER ASSEMBLY				
No.	PART DESCRIPTION	KIT #	QUANTITY	PART No.
1	127 DEFLECTOR PLATE ASSEMBLY		3	TAS3300
2	CUTTER SHAFT.		3	TAS3301
3	FAN BLADE SPACER		138	TA3004C
4	STANDARD CUTTER BLADE TTF.		135	TATTF002C
5	CUTTER BLADE LOCK NUT		6	TA005C
6	BEARING CIRCLIP		6	TA017C
7	CUTTER BEARING		6	TAS225
8	(SEE MOTOR MOUNT KIT)	*		
9	CUTTER HOUSING		6	TAS3302
10	CASSETTE ASSEMBLY SCREW		12	TAS3303
11	(SEE MOTOR MOUNT KIT)	*		
12	SPRING WASHER NG.		12	TAS3304
13				

THATCH-AWAY

Thatch-Away Supa FINE VERTICUTTER ASSEMBLY ASSEMBLY SPECIFICATIONS & PARTS LISTING



IMPORTANT NOTICE:

When assembling blades to the cutter shaft, index every blade 90 degrees and ensure the blade lock nuts are tight.

Refer to cassette installation in the operator manual when fitting a cassette to Thatch-Away.

NOTE: QUANTITIES ARE FOR 3 UNITS

FINE VERTI-CUTTER ASSEMBLY				
No.	PART DESCRIPTION	KIT #	QUANTITY	PART No.
1	127 DEFLECTOR PLATE ASSEMBLY		3	TAS3300
2	CUTTER SHAFT		3	TAS3301
3	15mm FAN BLADE SPACER		98	TAS3366
4	THIN CUTTER BLADE TTF.		98	TAS3387
5	CUTTER BLADE LOCK NUT		6	TA006C
6	BEARING CIRCLIP		6	TA017C
7	CUTTER BEARING		6	TAS225
8	(SEE MOTOR MOUNT KIT)	*		
9	CUTTER HOUSING		6	TAS3302
10	CASSETTE ASSEMBLY SCREW		12	TAS3303
11	(SEE MOTOR MOUNT KIT)	*		
12	SPRING WASHER NG.		12	TAS3304
13				

Fine Grass Verticutter
cassette

GreenTek®

Trusted by the best in the game

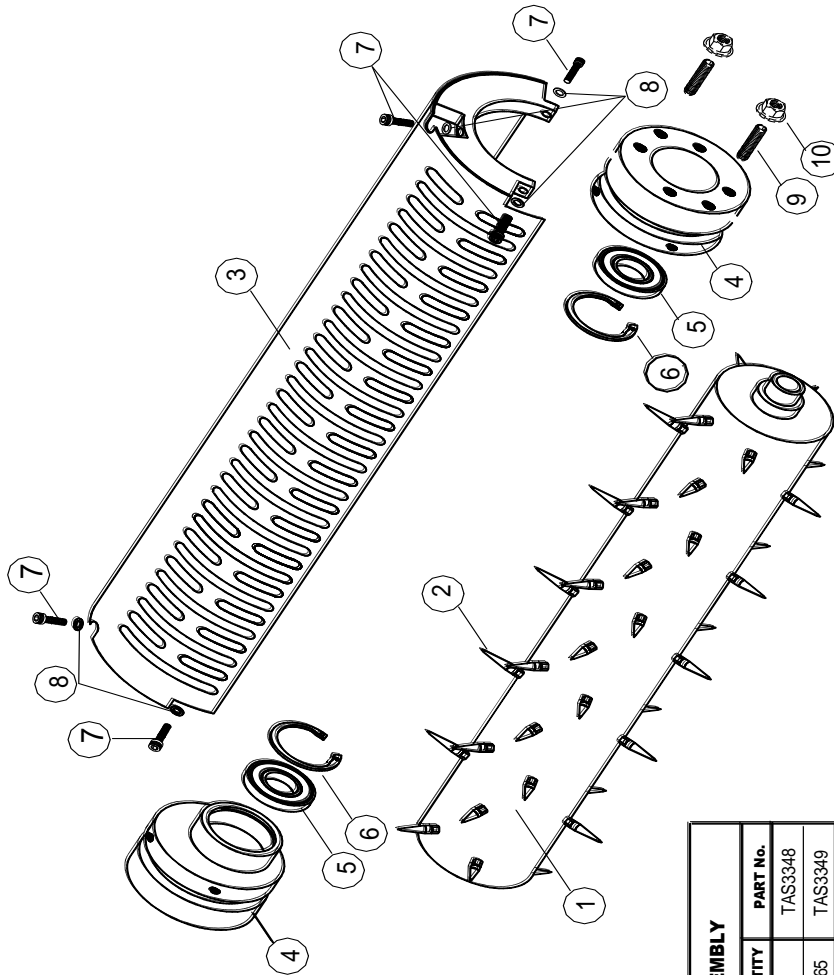
Tel: +44 (0)113 267 7000
 Email: info@greentek.uk.com
 Web: www.greentek.uk.com

THATCH-AWAY

Thatch-Away Supa

NON POWERED SAREL ROLLER CASSETTE ASSEMBLY SPECIFICATIONS & PARTS LISTING

SAREL ROLLER CASSETTE
ASSEMBLY



IMPORTANT NOTICE:

Refer to cassette installation in this manual when fitting a cassette to Thatch-Away.

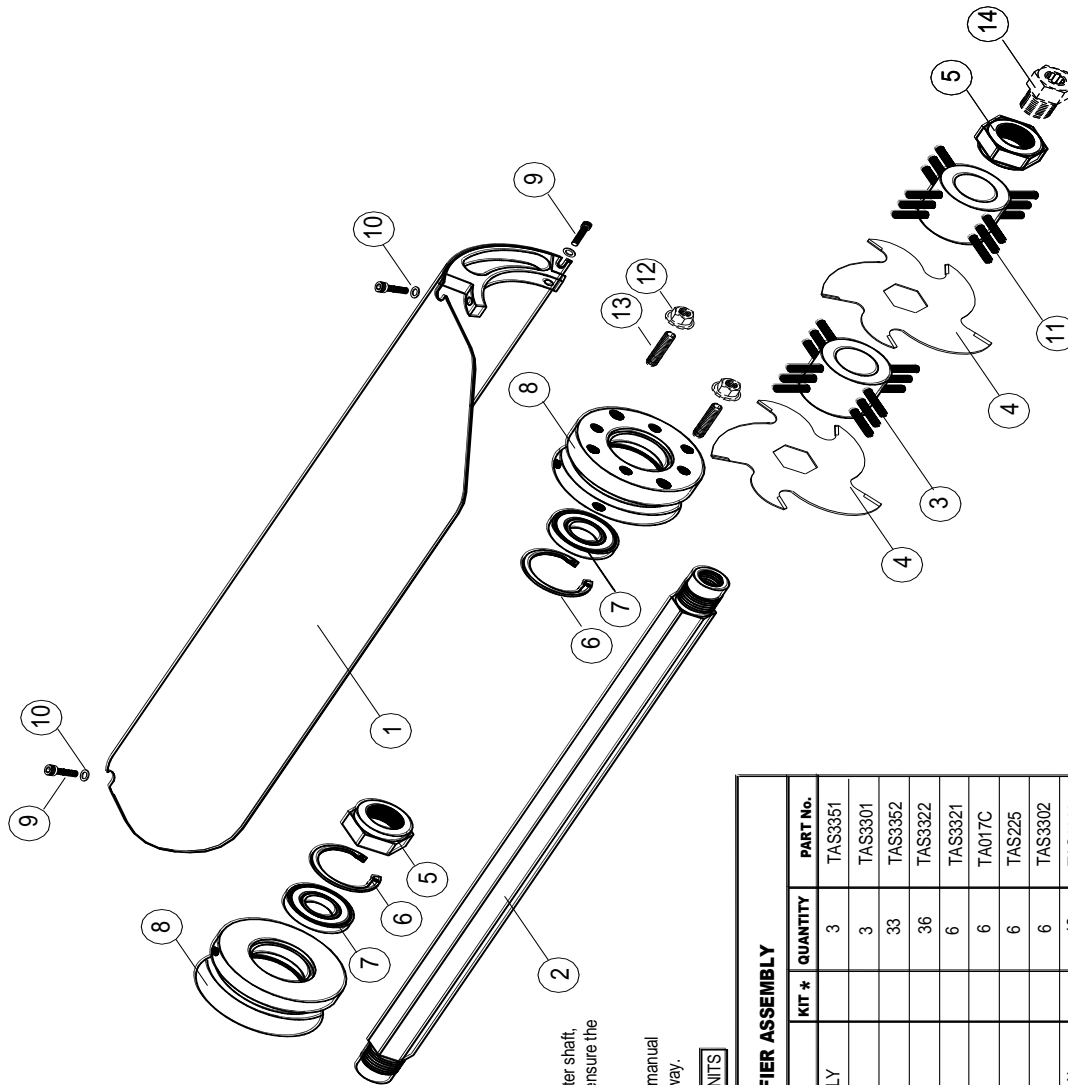
NOTE: QUANTITIES ARE FOR 3 UNITS

NON POWERED SAREL ROLLER ASSEMBLY				
No.	PART DESCRIPTION	KIT *	QUANTITY	PART No.
1	SAREL ROLLER		3	TAS3348
2	SAREL SPIKE		165	TAS3349
3	COVER ASSEMBLY		3	TAS3350
4	OFF-SET CUTTER HOUSING		6	TAS3344
5	CUTTER BEARING		6	TAS225
6	BEARING CIRCLIP		6	TA017C
7	CASSETTE ASSEMBLY SCREW		18	TAS3303
8	SPRING WASHER NG.		18	TAS3304
9	(SEE MOTOR MOUNT KIT)	*	*	
10	(SEE MOTOR MOUNT KIT)	*	*	
11				
12				
13				

Thatch-Away Supa

SCARIFIER CASSETTE ASSEMBLY SPECIFICATIONS & PARTS LISTING

SCARIFIER CASSETTE
ASSEMBLY



IMPORTANT NOTICE:

When assembling blades to the cutter shaft, index every blade 60 degrees and ensure the blade lock nuts are tight.

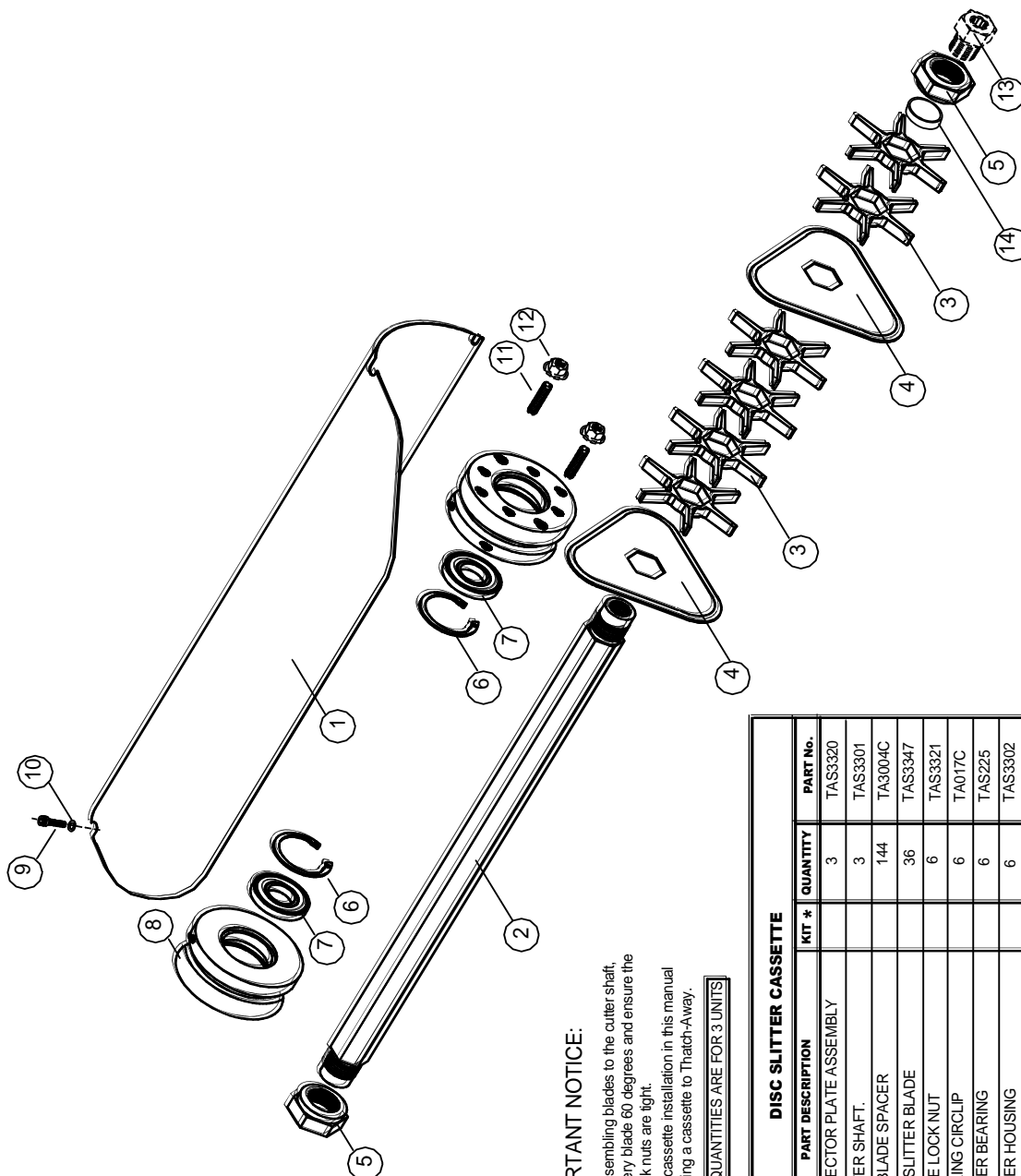
Refer to cassette installation in this manual when fitting a cassette to Thatch-Away.

NOTE: QUANTITIES ARE FOR 3 UNITS

SCARIFIER ASSEMBLY				
No.	PART DESCRIPTION	KIT *	QUANTITY	PART No.
1	DEFLECTOR PLATE ASSEMBLY		3	TAS3351
2	CUTTER SHAFT.		3	TAS3301
3	SWEEPING BLADE SPACER		33	TAS3352
4	CUTTER BLADE		36	TAS3322
5	BLADE LOCK NUT		6	TAS3321
6	BEARING CIRCLIP		6	TA017C
7	CUTTER BEARING		6	TAS225
8	CUTTER HOUSING		6	TAS3302
9	CASSETTE ASSEMBLY SCREW		12	TAS3303
10	SPRING WASHER NG.		12	TAS3304
11	SWEEPING BLADE END SPACER		6	TAS3353
12	(SEE MOTOR MOUNT KIT)	*	*	
13	(SEE MOTOR MOUNT KIT)	*	*	
14	(SEE MOTOR MOUNT KIT)	*	*	

Thatch-Away Supa DEEP SLICER CASSETTE ASSEMBLY SPECIFICATIONS & PARTS LISTING

DEEP SLICER CASSETTE
ASSEMBLY



IMPORTANT NOTICE:

When assembling blades to the cutter shaft, index every blade 60 degrees and ensure the blade lock nuts are tight.

Refer to cassette installation in this manual when fitting a cassette to Thatch-Away.

NOTE: QUANTITIES ARE FOR 3 UNITS

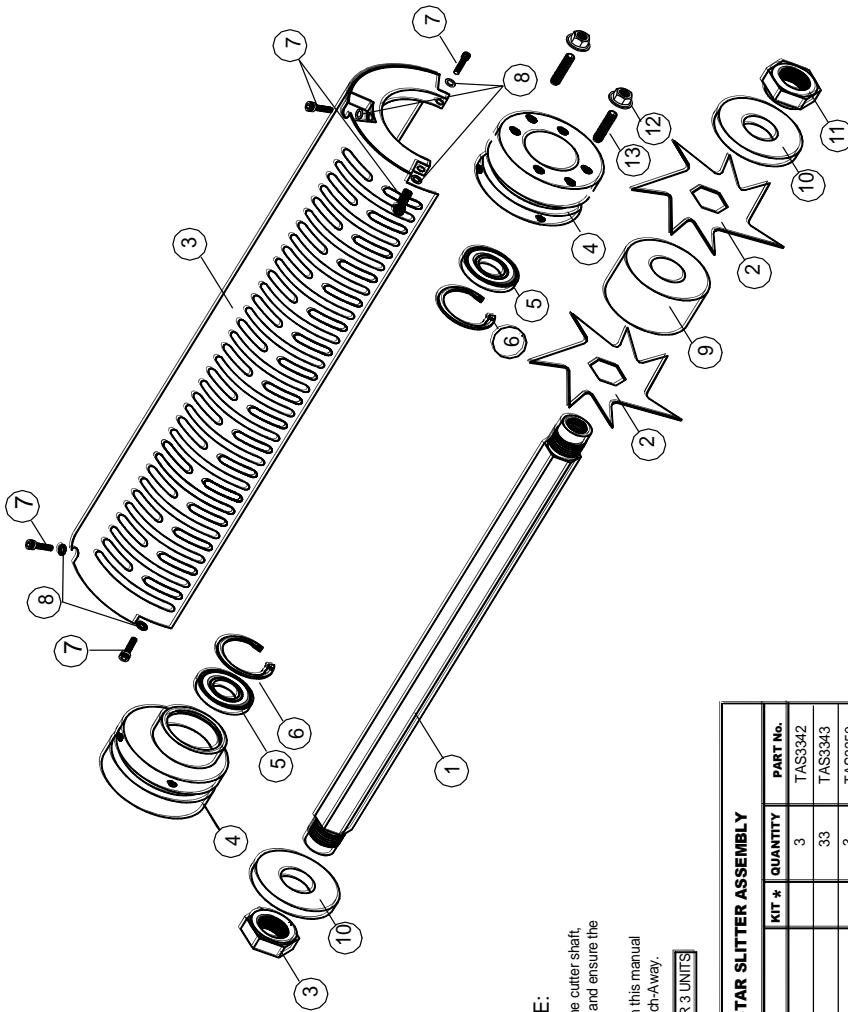
DISC SLITTER CASSETTE				
No.	PART DESCRIPTION	KIT #	QUANTITY	PART No.
1	DEFLECTOR PLATE ASSEMBLY		3	TAS3320
2	CUTTER SHAFT		3	TAS3301
3	FAN BLADE SPACER		144	TA3004C
4	DISC SLITTER BLADE		36	TAS3347
5	BLADE LOCK NUT		6	TAS3321
6	BEARING CIRCLIP		6	TA017C
7	CUTTER BEARING		6	TAS225
8	CUTTER HOUSING		6	TAS3302
9	CASSETTE ASSEMBLY SCREW		12	TAS3303
10	SPRING WASHER NG.		12	TAS3304
11	(SEE MOTOR MOUNT KIT)	*	*	
12	(SEE MOTOR MOUNT KIT)	*	*	
13	(SEE MOTOR MOUNT KIT)	*	*	
14	CUTTER SHAFT END SPACER		6	TAS3385

THATCH-AWAY

Thatch-Away Supa

NON POWERED
STAR SLITTER CASSETTE
ASSEMBLY SPECIFICATIONS
&
PARTS LISTING

STAR SLITTER CASSETTE
ASSEMBLY



IMPORTANT NOTICE:

When assembling blades to the cutter shaft, index every blade 60 degrees and ensure the blade lock nuts are tight.
Refer to cassette installation in this manual when fitting a cassette to Thatch-Away.

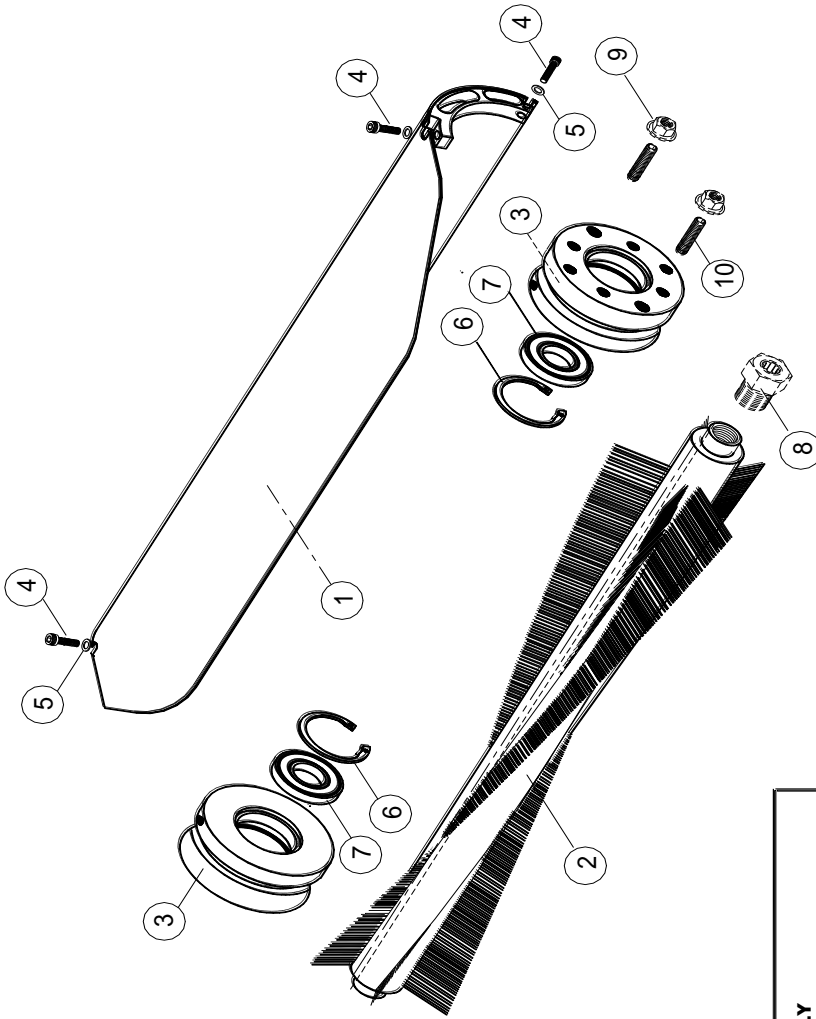
NOTE: QUANTITIES ARE FOR 3 UNITS

NON POWERED STAR SLITTER ASSEMBLY				
No.	PART DESCRIPTION	KIT #	QUANTITY	PART No.
1	OFF-SET CUTTER SHAFT		3	TAS3342
2	7 POINT SLITTING BLADE		33	TAS3343
3	COVER ASSEMBLY		3	TAS3350
4	OFF-SET CUTTER HOUSING		6	TAS3344
5	CUTTER BEARING		6	TAS225
6	BEARING CIRCLIP		6	TA017C
7	CASSETTE ASSEMBLY SCREW		18	TAS3303
8	SPRING WASHER NG.		18	TAS3304
9	MAIN BLADE SPACER		30	TAS3345
10	END BLADE SPACER		6	TAS3346
11	BLADE LOCK NUT		6	TAS3321
12	(SEE MOTOR MOUNT KIT)	*	*	
13	(SEE MOTOR MOUNT KIT)	*	*	

THATCH-AWAY

Thatch-Away Super BROOM CASSETTE BLACK ASSEMBLY SPECIFICATIONS & PARTS LISTING

ROTARY BRUSH CASSETTE
ASSEMBLY



IMPORTANT NOTICE:

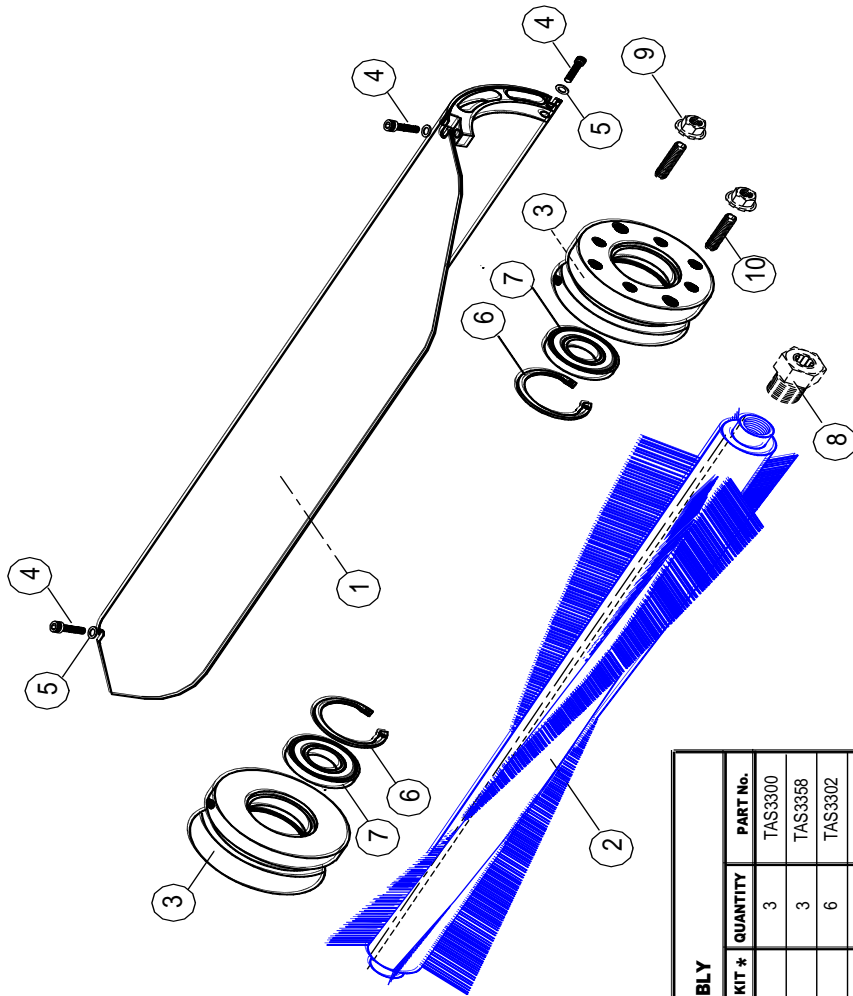
Refer to cassette installation in this manual when fitting a cassette to Thatch-Away.

NOTE: QUANTITIES ARE FOR 3 UNITS

BROOM ASSEMBLY				
NO.	PART DESCRIPTION	KIT #	QUANTITY	PART No.
1	DEFLECTOR PLATE		3	TAS3300
2	BROOM ASSEMBLY BLACK		3	TAS3319
3	CUTTER HOUSING		6	TAS3302
4	CASSETTE ASSEMBLY SCREW		12	TAS3303
5	SPRING WASHER NG.		12	TAS3304
6	BEARING CIRCLIP		6	TA017C
7	CUTTER BEARING		6	TAS225
8	(SEE MOTOR MOUNT KIT)	*	*	
9	(SEE MOTOR MOUNT KIT)	*	*	
10	(SEE MOTOR MOUNT KIT)	*	*	
11				
12				
13				

Thatch-Away Super BROOM CASSETTE BLUE ASSEMBLY SPECIFICATIONS & PARTS LISTING

ROTARY BRUSH CASSETTE
ASSEMBLY



IMPORTANT NOTICE:

Refer to cassette installation in this manual when fitting a cassette to Thatch-Away.

NOTE: QUANTITIES ARE FOR 3 UNITS

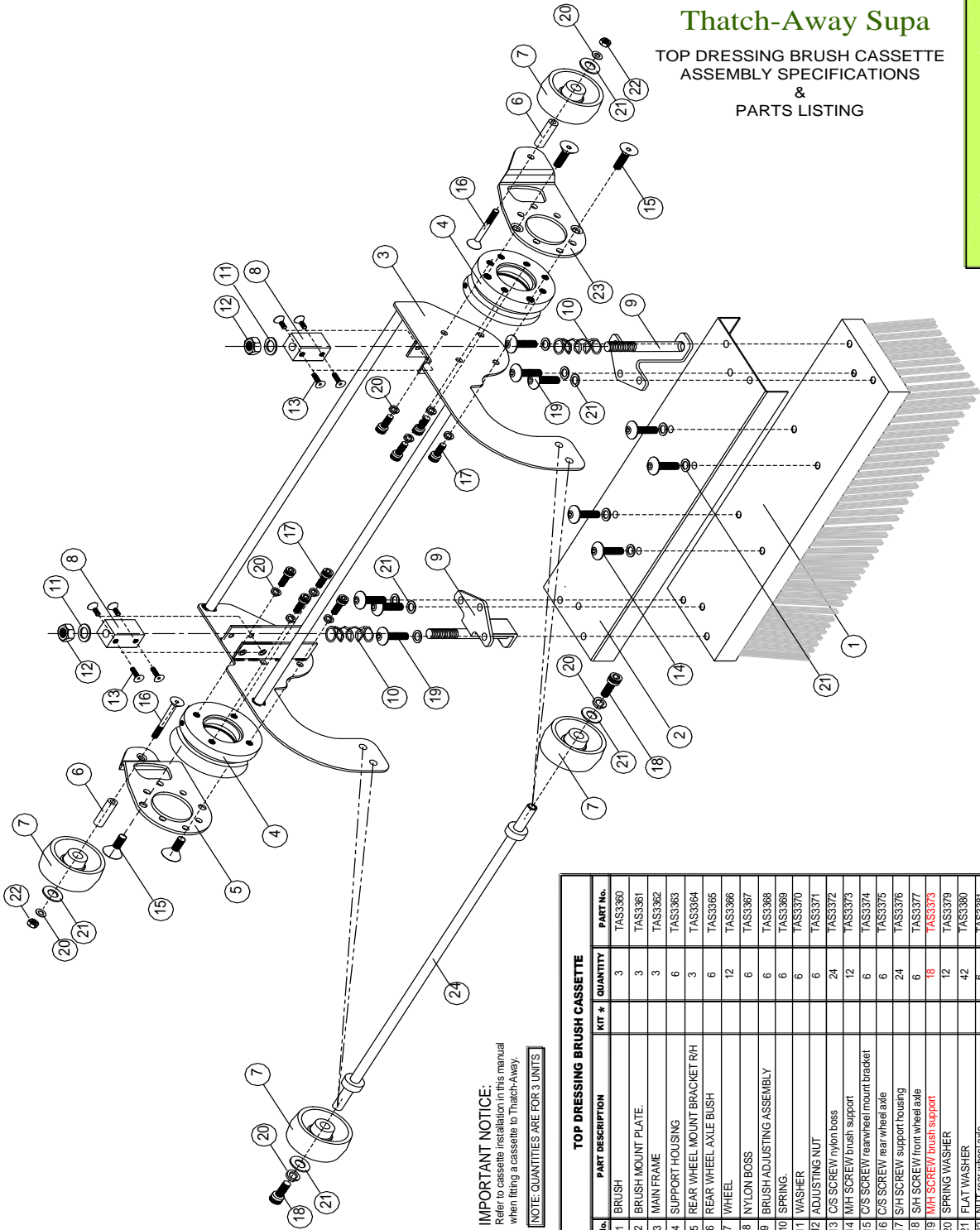
BROOM ASSEMBLY				
No.	PART DESCRIPTION	KIT *	QUANTITY	PART No.
1	DEFLECTOR PLATE		3	TAS3300
2	BROOM ASSEMBLY BLUE		3	TAS3358
3	CUTTER HOUSING		6	TAS3302
4	CASSETTE ASSEMBLY SCREW		12	TAS3303
5	SPRING WASHER NG.		12	TAS3304
6	BEARING CIRCLIP		6	TA017C
7	CUTTER BEARING		6	TAS225
8	(SEE MOTOR MOUNT KIT)	*	*	
9	(SEE MOTOR MOUNT KIT)	*	*	
10	(SEE MOTOR MOUNT KIT)	*	*	
11				
12				
13				

THATCH-AWAY

Thatch-Away Supa

TOP DRESSING BRUSH CASSETTE ASSEMBLY SPECIFICATIONS & PARTS LISTING

TOP DRESSING BRUSH CASSETTE
ASSEMBLY

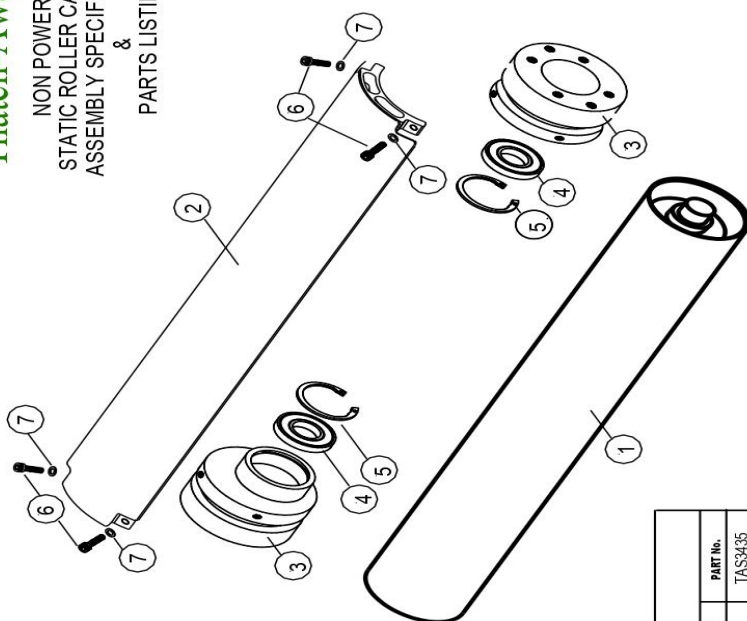


IMPORTANT NOTICE:
Refer to cassette installation in this manual
when fitting a cassette to Thatch-Away.
[NOTE: QUANTITIES ARE FOR 3 UNITS]

TOP DRESSING BRUSH CASSETTE			
No.	PART DESCRIPTION	KIT *	QUANTITY
1	BRUSH	3	TAS3380
2	BRUSH MOUNT PLATE.	3	TAS3361
3	MAIN FRAME	3	TAS3362
4	SUPPORT HOUSING	6	TAS3363
5	REAR WHEEL MOUNT BRACKET RH	3	TAS3364
6	REAR WHEEL AXLE BUSH	6	TAS3365
7	WHEEL	12	TAS3366
8	NYLON BOSS	6	TAS3367
9	BRUSH ADJUSTING ASSEMBLY	6	TAS3368
10	SPRING	6	TAS3369
11	WASHER	6	TAS3370
12	ADJUSTING NUT	6	TAS3371
13	CS SCREW nylon boss	24	TAS3372
14	MH SCREW brush support	12	TAS3373
15	CS SCREW rear/wheel mount bracket	6	TAS3374
16	CS SCREW rear wheel axle	6	TAS3375
17	SH SCREW support housing	24	TAS3376
18	SH SCREW front wheel axle	6	TAS3377
19	MH SCREW brush support	18	TAS3378
20	SPRING WASHER	12	TAS3379
21	FLAT WASHER	42	TAS3380
22	NUT rear wheel axle	6	TAS3381
23	REAR WHEEL MOUNT BRACKET LH	3	TAS3382
24	front wheel axle	3	TAS3386

Thatch-Away Supa

NON POWERED
STATIC ROLLER CASSETTE
ASSEMBLY SPECIFICATIONS
&
PARTS LISTING



IMPORTANT NOTICE:

Refer to cassette installation in the operator manual when fitting a cassette to Thatch-Away.

NOTE: QUANTITIES ARE FOR 3 UNITS

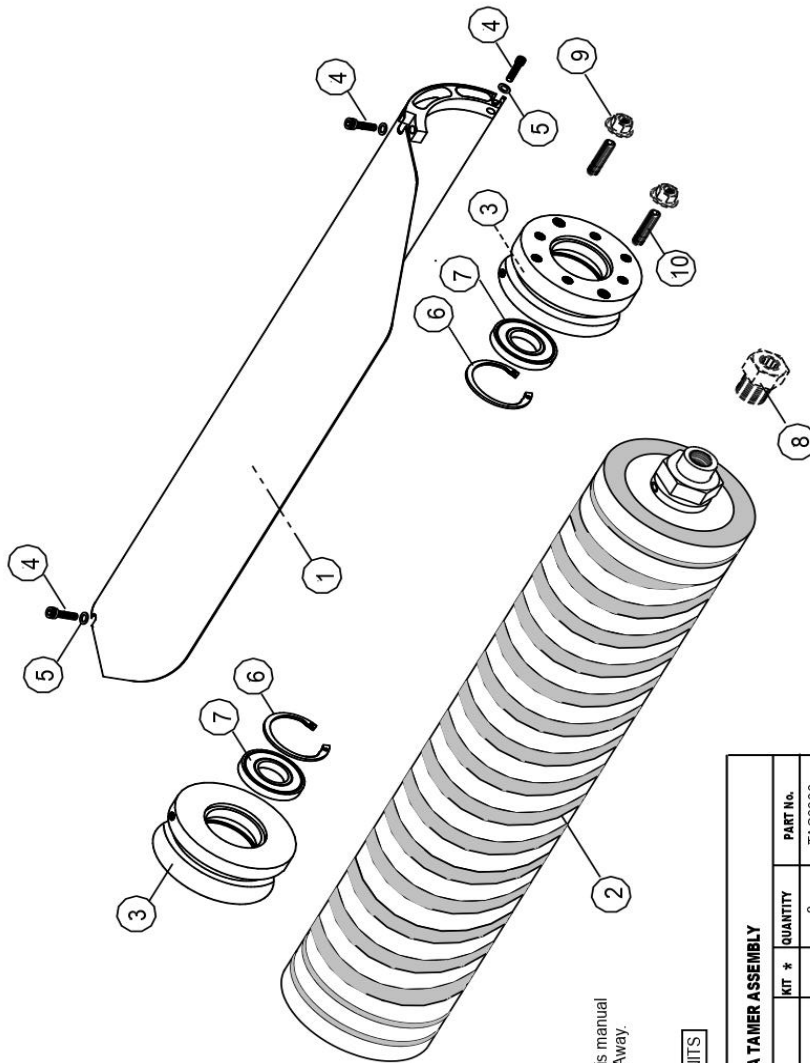
NON POWERED STATIC ROLLER ASSEMBLY				
No.	PART DESCRIPTION	MT *	QUANTITY	PART No.
1	STATIC ROLLER		3	TAS3435
2	COVER ASSEMBLY		3	TAS3436
3	OFF-SET CUTTER HOUSING		3	TAS3437
4	CUTTER BEARING		6	TAS225
5	BEARING CIRCLIP		6	TA017C
6	CASSETTE ASSEMBLY SCREW		12	TAS3303
7	SPRING WASHER NG.		12	TAS3304
8				
9				

STATIC ROLLER CASSETTE
ASSEMBLY

THATCH-AWAY

Thatch-Away Super BERMUDA TAMARA ASSEMBLY SPECIFICATIONS & PARTS LISTING

BERMUDA TAMER CASSETTE
ASSEMBLY



IMPORTANT NOTICE:

Refer to cassette installation in this manual when fitting a cassette to Thatch-Away.

NOTE: QUANTITIES ARE FOR 3 UNITS

BERMUDA TAMER ASSEMBLY				
No.	PART DESCRIPTION	KIT *	QUANTITY	PART No.
1	DEFLECTOR PLATE		3	TAS3300
2	ROTARY WIRE ASSEMBLY		3	TAS3469
3	CUTTER HOUSING		6	TAS3302
4	CASSETTE ASSEMBLY SCREW		12	TAS3303
5	SPRING WASHER ING.		12	TAS3304
6	BEARING CIRCLIP		6	TA017C
7	CUTTER BEARING		6	TAS225
8	(SEE MOTOR MOUNT KIT)	*	*	
9	(SEE MOTOR MOUNT KIT)	*	*	
10	(SEE MOTOR MOUNT KIT)	*	*	
11				
12				
13				

28 A.

THATCH-AWAY

MAINTENANCE

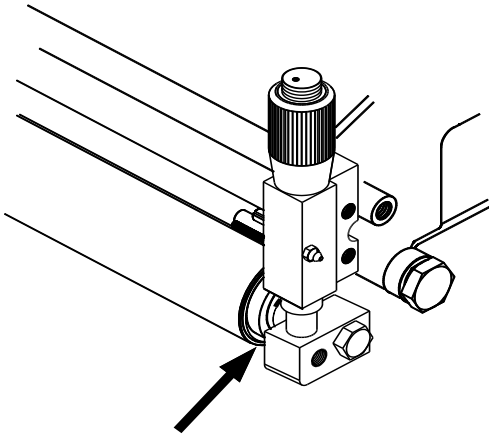
MAINTENANCE

CASSETTE MAINTENANCE

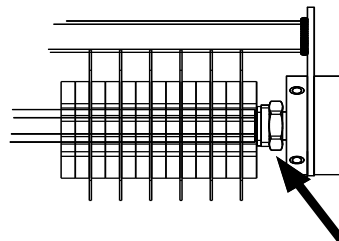
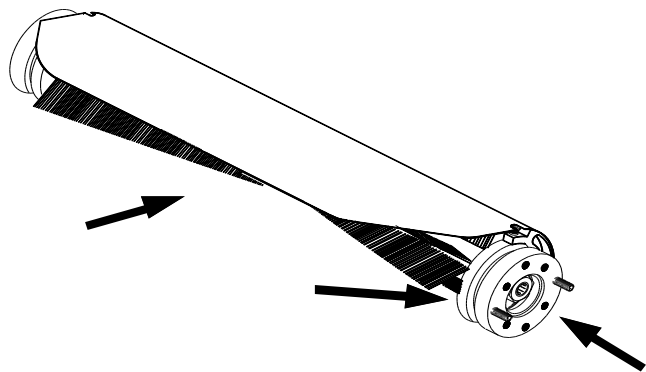
After use, blow off the units with compressed air line. Do not pressure wash unless there is debris stuck to the inside of the deflector plate, which should be washed off taking care not to direct the jet into the roller and rotor bearings. When washing Rotary or Topdressing Brushes, or the Scarifiers with the brush spacer, use only cold water to avoid softening and distorting the bristles.

Check tightness of all bolts and nuts monthly, paying particular attention to the large Cutter Blade Lock Nuts at both ends of the Rotor assembly.

When washing Rotary or Topdressing Brushes, or the Scarifiers with the brush spacer, use only cold water to avoid softening and distorting the bristles

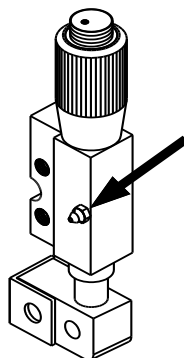


Do not direct the pressure wash jet into the roller bearings.



Check tightness of all bolts and nuts monthly, paying particular attention to the large Cutter Blade Lock Nuts at both ends of the Rotor assembly

HEIGHT OF CUT ASSEMBLY MAINTENANCE



Do not over grease
Only grease to remove
any water that may have collected
in the assembly.

THATCH-AWAY

INSTRUCTIONS FOR DISASSEMBLY, CLEANING AND REASSEMBLY OF THE THATCH AWAY SET-BY-FEEL HEIGHT ADJUSTER.

Item numbers refer to diagram on the following page.

1. Remove dust cap item 22 and discard if damaged in anyway
2. Release locking screw item 1(if very tight tap top of item 2 to shock free)
3. Rotate item 2, grooved gauge, fully(anti-clockwise) and pull away from item 4 (this may be very tight with grit, apply WD40 or similar to free) Place item 2 in some cleaning fluid and remove O ring item3. Remove item 1 from grooved gauge.
4. Remove bolt or ball stud which passes through items 14,15,16 & 17 into the front roller.
5. Turn item 14, anti-clockwise and fully remove from assembly.
6. Turn item 9, detent lock screw, anti-clockwise and fully remove then remove item 8, spring and item 7, detent ball from housing.
7. Release item 13, circlip from bottom of adjustment knob, remove item 12, thrust washer and pull item 4, adjustment knob from Height adjuster mounting block.
8. ALL ITEMS SHOULD NOW BE CLEANED AND INSPECTED.
9. Start re-assembly by fitting a new O ring, item 5 to item 4. Apply some grease to all mating surfaces and carefully insert item 4 into the mounting block. Secure in place with thrust washer and circlip. Ensure this item turns freely within the block.
10. Insert detent ball, spring and detent locking screw, items 7,8 & 9.
11. Carefully turn lock screw clockwise until this applies some spring pressure onto the detent ball and a firm click can be felt when the adjusting knob is turned. (TOO MUCH PRESSURE WILL DAMAGE THE SPRING AND LOCK THE ASSEMBLY)
12. Apply a little grease through item 10, grease nipple and continue to rotate item 4.
13. Re-fit item 14, adjustment arm into the base of assembly and rotate clockwise as far as possible then turn back anti-clockwise to a mid-point position.
14. Fit a new O ring to item 2, grooved gauge and apply a layer of grease. Item 2 can now be screwed(clockwise) into item 4 and onto the top of item 14. The fixing bolt or ball stud can now be re-fitted through items 17,16 & 15 into the front roller, and this can be fully tightened. Ensure the angle stop, item 17 fits correctly behind the back edge of item 14. NOT below.
15. REFER TO THE SEPARATE INSTRUCTIONS FOR CALIBRATION OF THE HEIGHT ADJUSTER on the following pages.
16. After calibration, fit a new set screw, item 1 and secure, this will hold the grooved gauge in the correct position.
17. Apply enough grease through item 10, grease nipple to fully lubricate but do not over grease.
18. Fit new dust cap, item 22.

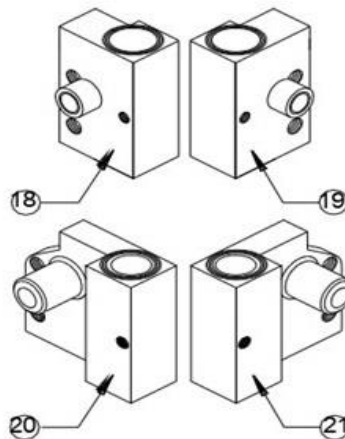
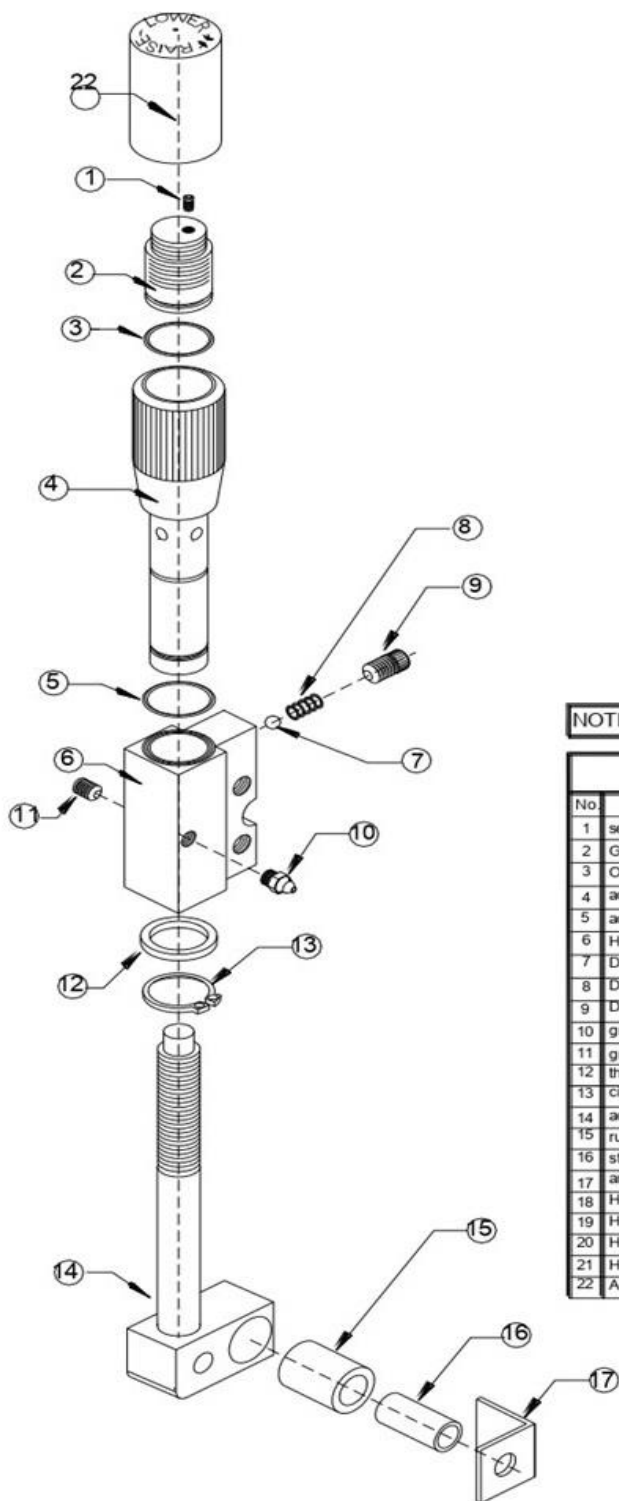
NOTE, It is essential that the dustcover is kept in place at all times, failure to do so can result in dirt ingress causing the height adjuster to seize.

THATCH-AWAY

Thatch-Away Supa

"SET BY FEEL"
height adjusters
CONFIGURATION
TO SUIT MODEL ALL MODEL'S

"SET BY FEEL" height adjusters
CONFIGURATION
TO SUIT ALL MODEL'S

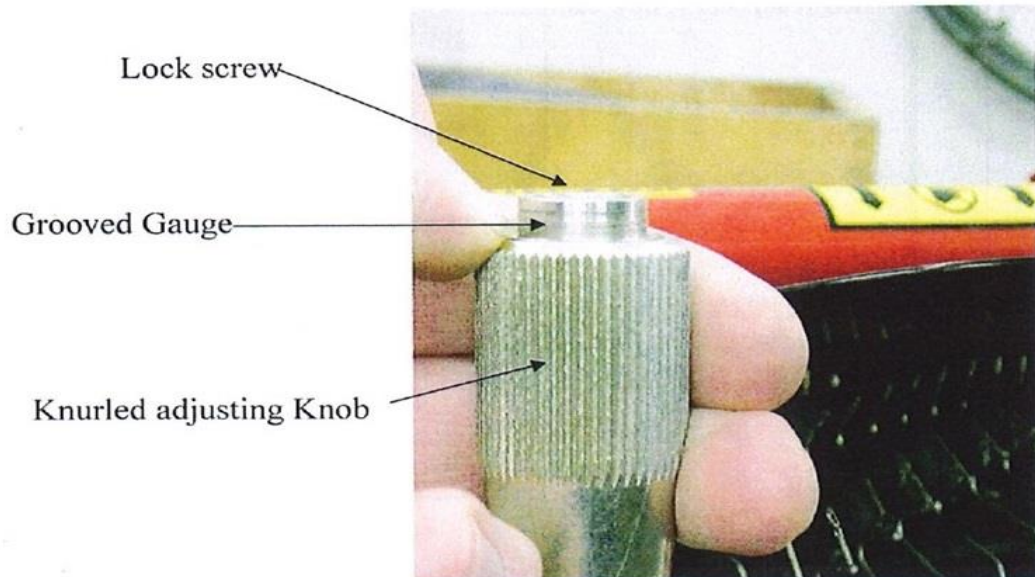


NOTE: QUANTITIES ARE FOR 3 UNITS

"SET BY FEEL" HEIGHT OF CUT ADJUSTER COMPONENTS			
No.	PART DESCRIPTION	QUANTITY	PART No.
1	set screw		TAS3398
2	Grooved Gauge		TAS3399
3	O ring		TAS3400
4	adjustment knob		TAS3401
5	adjustment knob O ring		TAS3402
6	Height adjuster mount block		TAS3403
7	Detent ball		TAS3404
8	Detent spring		TAS3405
9	Detent lock screw		TAS3406
10	grease nipple		TAS3407
11	grease nipple plug		TAS3408
12	thrust washer		TAS3409
13	circlip		TAS3410
14	adjustment arm		TAS3411
15	rubber bush		TAS3412
16	steel bush		TAS3413
17	angle stop		TAS3414
18	Height adjuster mount block john deere 2243 right hand		TAS3421
19	Height adjuster mount block john deere 2243 left hand		TAS3422
20	Height adjuster mount block john deere 2500 right hand		TAS3423
21	Height adjuster mount block john deere 2500 left hand		TAS3424
22	Adjuster Dust Cover		TAS3425

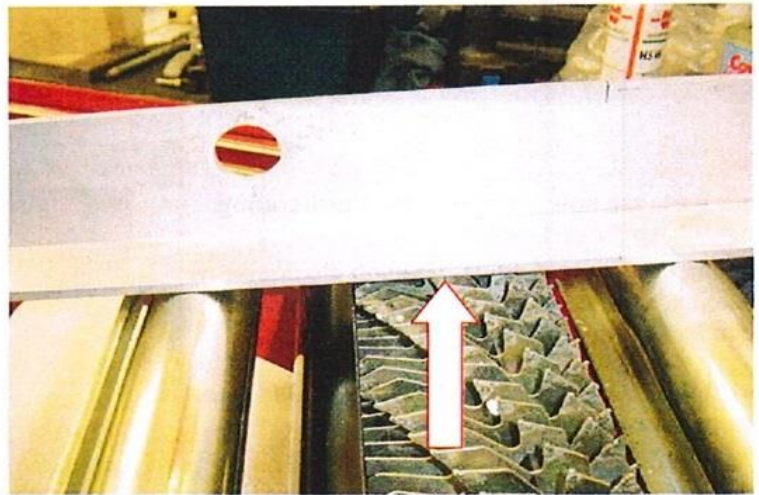
THATCH-AWAY

CALIBRATION INSTRUCTIONS FOR THE NEW THATCH-AWAY "SET BY FEEL" TURN AND CLICK ADJUSTERS



1. Fit a Verti-cutter cassette into the chassis and turn upside down on the bench.

2. Using a straight edge (as shown) turn the knurled adjusters, up or down, until both sides are level, and the blade tips are just touching the straight edge.



3. Now turn the *Thatch-Away* unit back onto its rollers and slacken the Grooved Gauge locking screw.

GreenTek[®]

Trusted by the best in the game

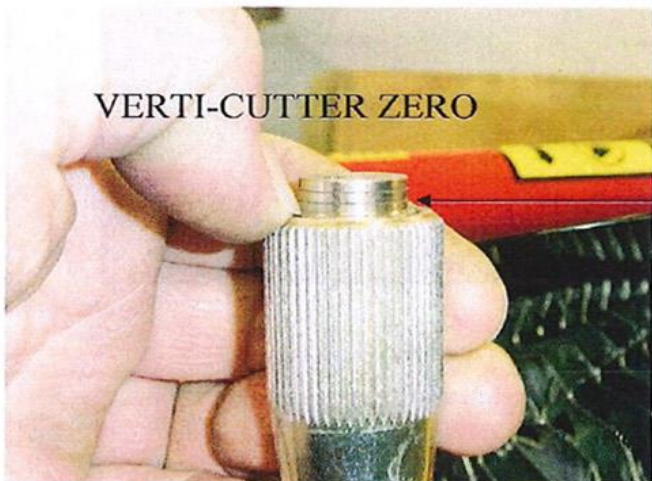
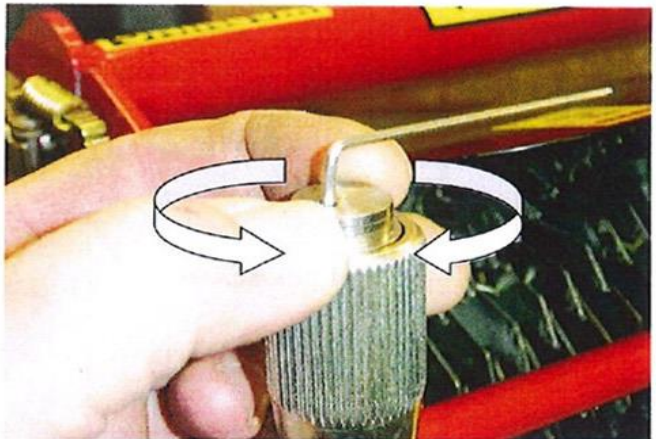
Tel: +44 (0)113 267 7000

Email: info@greentek.uk.com

Web: www.greentek.uk.com

THATCH-AWAY

- 4 Ensure the lock screw is loose and **turn** the stainless steel Grooved gauge until the lower stepped edge is aligned with the top face of the Knurled handgrip. Tighten the lock screw carefully making sure that the Knurled knob doesn't turn at the same time.
The "Set by Feel" height adjuster is now calibrated.



Stepped edge of Grooved gauge, correctly aligned with top face of Knurled handgrip.

Your units are now set at zero for Verti-cutting.

Turning the Knurled adjusting knob clockwise by one click, will lower the Thatch-Away into the green by 0.25mm.(0.010")

One full turn clockwise (4 clicks) is equal to 1mm into the green.(0.040")

1½ turns = 1/16"

When the grooves on the gauge are aligned with the top face of the Knurled adjusting knob, this shows how many mm into the ground the attachment is working at.



If SCARIFIER cassettes are fitted, their Zero position is with the TOP of the Grooved gauge level with the top face of the knurled adjusting knob.

Setting is the same as other cassettes, 1 turn (4 clicks) = 1mm into the ground.

GreenTek[®]

Trusted by the best in the game

Tel: +44 (0)113 267 7000

Email: info@greentek.uk.com

Web: www.greentek.uk.com

THATCH-AWAY

GUARANTEE

Your thatch-Away is covered by a 5 year parts and labour warranty for commercial use, and a 3 month warranty for hire use.

This is a genuine bumper-to-bumper and includes everything except components subject to fair wear and tear such as blades, brushes, bearings, drive splines, etc, and damage caused by corrosion, abuse or lack of maintenance.

CONTACT US

For further information, support or advice please contact:

info@greentek.uk.com

+44 (0)113 267 7000

GreenTek[®]

Trusted by the best in the game

Tel: +44 (0)113 267 7000

Email: info@greentek.uk.com

Web: www.greentek.uk.com