

GreenTek®

Trusted by the best in the game

MULTI-BRUSH

OPERATOR'S MANUAL



INTRODUCTION

Thank you for purchasing the Multi-Brush. This British designed and built product has been engineered to give years of use, provided it is used and maintained correctly.

As with all tractor mounted equipment it is essential that all operators read and follow these instructions in order to use the Multi-Brush safely without endangering themselves or other persons.

MACHINERY MARKINGS

Your machine carries a serial number plate. Please quote your serial number when ordering spare parts.

APPLICATION

The Multi-Brush is a unique dual-purpose brush which can be used

either with the wing brushes folded out for light brushing of large areas such as sports fields and golf course fairways, or with all the brushes folded together on the centre frame for more intensive brushing, for example when brushing-in topdressing.

This equipment is designed solely for brushing sports and amenity turf. Use in any other way is contrary to the intended use.

The manufacturer accepts no liability for damage or injury resulting from misuse. Compliance with the instructions in this manual is essential for safe operation.

SAFETY WARNINGS

General

This turf maintenance system is designed to be operated by a 4WD tractor of not less than 30HP with hydraulic lifting capacity of at least 450kg. Front weights may be necessary when operating this machine.

All operators must also read and follow all instructions in the operator's handbook supplied with the tractor.

Before Starting the Tractor Engine

Check that the brakes are applied, drives are in neutral, guards are in position and intact, and bystanders are clear of the machine. Do not run the engine in a building without adequate ventilation.

Operating the Machine

Always wear suitable protective clothing (eg. Gloves and steel toecap footwear) when operating sharp or heavy machinery.

Before moving the machine, check to ensure that all parts are in good working order, paying particular attention to tyres, steering, brakes and lights. Double check that the attachment is fitted securely to the tractor 3-point linkage.

Always observe the Highway Code both on and off the roads. Keep alert and aware at all times. Remember that some people are deaf or blind, and that children and animals can be unpredictable. Keep travelling speeds low enough for an emergency stop to be effective and safe at all times.

Take special care when reversing and ensure that the area behind is clear of obstructions. Remove or avoid obstructions in the working area.

Leaving the Driving Seat

Park the tractor on level ground. Before leaving the driving seat, stop the engine and make sure all moving parts are stationary. Apply brakes and disengage all drives. Remove the ignition key.

Slopes

Take extra care when working on slopes.

Local undulations and sinkage will change the general slope. Avoid ground conditions which will cause the tractor to slide or roll over. Apply brakes before disengaging tractor gears. Keep the tractor completely under control when disengaging the traction clutch. Remember that the extra weight of the attachment will affect the balance and stability of your tractor.

Inspect all components and hydraulic hoses for damage before using. Do not use with faulty components.

Switch off tractor engine and operate spool valves to release hydraulic pressure before connecting or disconnecting hoses. Never work on a machine with tractor running or unreleased pressure in the hydraulic system.

Never operate machine near bystanders.

WARNING – brushes fold out to 5.4m.

MULTI-BRUSH

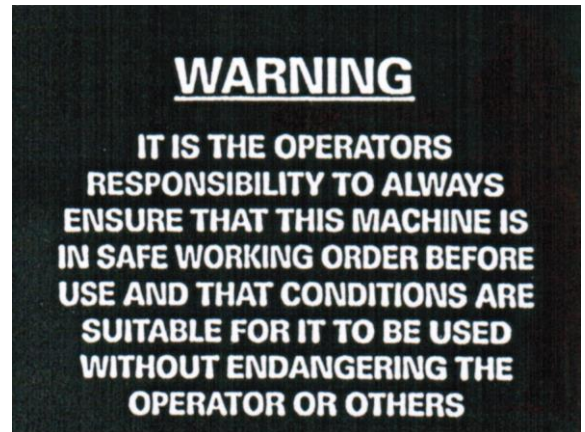
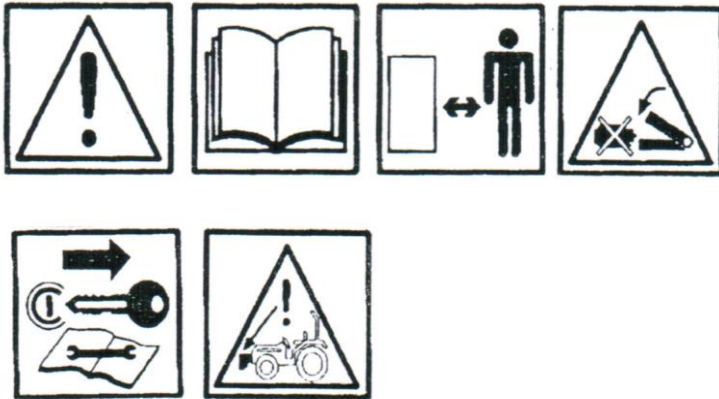
Removing the Attachment from the Tractor

Lock down all of the drop legs BEFORE uncoupling the attachment from the 3-point linkage.

REMEMBER: IT IS THE OPERATORS RESPONSIBILITY TO ALWAYS ENSURE THAT THIS MACHINE IS IN SAFE WORKING ORDER BEFORE USE AND THAT CONDITIONS ARE SUITABLE FOR IT TO BE USED WITHOUT ENDANGERING THE OPERATOR OR OTHERS.

WARNING DECALS

The following decals are affixed to your Multi-Brush which must be obeyed at all times. Replacement decals are available free of charge from the manufacturers.



GreenTek[®]

Trusted by the best in the game

Tel: +44 (0)113 267 7000
Email: info@greentek.uk.com
Web: www.greentek.uk.com

OPERATING INSTRUCTIONS

Fitting to Tractor

The Multi-Brush is intended to be used with 4 wheel drive compact tractors of at least 30hp. It is essential that operators follow all safety procedures set out in the tractor operator's manual.

The Multi-Brush simply attaches to any Category 1 3-point linkage by means of conventional top and bottom link pins. Tighten any anti-sway chains and lock the 3 stand legs into their raised position. Ensure that the linkage is adjusted correctly so that the Multi-Brush centre frame hangs level from side to side. Adjust the top-link so that the centre post to which it attaches is vertical when in operation.

Using the Multi-Brush

Connect the hydraulic pipes to the tractor (1 double-acting spool valve is required).

For wide brushing operate the hydraulic spool valve and the 2 wing arms will fold out. Hold the valve open until the hydraulic rams are fully extended. Operate the valve in the other direction to fold in the brushes for intensive brushing or transport

WARNING: Do not operate or fold out brush without checking for obstacles. Keep bystanders at least 5m away.

Adjusting the Floatation Spring

The Multi-Brush is fitted with a counterbalance spring to enable the main centre frame of the brush to float over the ground with the same downwards pressure as the lighter wing brushes. It is fitted as per the following instructions.

To adjust the spring tension, all brushes should be lowered to the ground. Then the floatation spring turnbuckle should be tightened to increase the tension on the spring until the centre frame can be lifted by hand with the same feeling of weight as the wing brushes.

MULTI-BRUSH



Fit the tractor lifting arms to the lower linkage pins of the Multi-Brush and secure with the lynch pins.



Fit the special top-link supplied with the brush. Ensure the upper spring anchor is at the tractor end of the top-link.



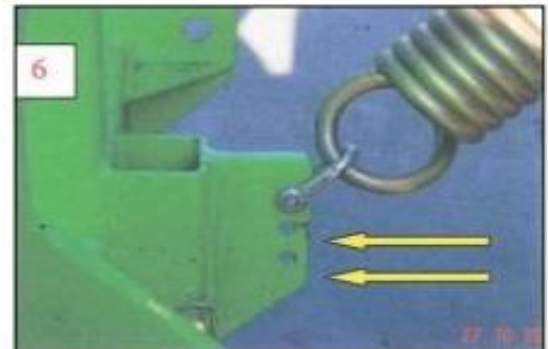
Raise the brush to transport height using the tractor hydraulics.



The flotation spring assembly can now be easily fitted to the upper spring anchor. Ensure the 'D' shackle is tightened securely.



Ensure the brush parking stands are raised, then lower the brush to the ground, and adjust the upper link to ensure the brush headstock is vertical. Open the wing sections and adjust the turnbuckle to obtain the required flotation of the main frame.



If more flotation is required, and there is no more adjustment on the turnbuckle. Move the spring to a lower position.

Note: Adjustment and repositioning of the spring **must** be carried out with the linkage raised and no tension on the spring.

GreenTek[®]

Trusted by the best in the game

Tel: +44 (0)113 267 7000

Email: info@greentek.uk.com

Web: www.greentek.uk.com

MULTI-BRUSH

Fitting the Floating Top-Link Bracket



For use on golf courses where the direction of brushing involves traversing across severe ridge and furrow undulations, the optional Floating Top-Link Bracket shown above should be installed.

This is only for very undulating ground to allow the brush to rock from front to back to follow the undulations.

If the ground is flat or gently contoured this bracket should not be installed.

If using the bracket, the counterbalance spring will need to have the tension reduced accordingly.

GreenTek[®]

Trusted by the best in the game

Tel: +44 (0)113 267 7000

Email: info@greentek.uk.com

Web: www.greentek.uk.com

MULTI-BRUSH

Uncoupling the Multi-Brush

To uncouple the Multi-Brush from the tractor, first lift the 3-point linkage, then fully lower and securely lock down all three drop legs. Then lower the mainframe and uncouple from the tractor.

NEVER UNCOUPLE THE MULTI-BRUSH FROM THE TRACTOR UNLESS ALL 3 DROP LEGS ARE SECURELY LOCKED DOWN.

MAINTENANCE

Pressure-wash all debris off the brushes each time of use, this will

considerably extend brush life. However, do not point the jet closely at the bristles. Apply a small amount of grease to the sloping ramp on which the hydraulic ram slides. Grease all nipples weekly.

Lock the 3 stand legs in their lower position before uncoupling the

Multi-Brush from the tractor, and always store in this position with the brushes held clear of the ground.

GreenTek[®]

Trusted by the best in the game

Tel: +44 (0)113 267 7000

Email: info@greentek.uk.com

Web: www.greentek.uk.com

MULTI-BRUSH

PARTS LISTING FOR MULTI-BRUSH

Item	Description	Qty	Part No
1	MAIN FRAME	1	HMB 001
2	WING ARM	2	HMB 002
3	WING FRAME	2	HMB 003
4	RAM LINK YOKE	2	HMB 008
5	TOP LINK PIN	1	HMB 005c
6	LYNCH PIN	3	HMB 006c
7	LOWER LINK PIN	2	HMB 007c
8	SUPPORT LEG PIN	3	HMB 004c
9	R-clip	5	HMB 010c
10	SUPPORT LEG	3	HMB 009
11	BRUSH MOUNT BLT	54	HMB 011c
12	WING ARM PIVOT PIN	2	HMB 012c
13	HYD RAM MOUNT PIN	2	HMB 013c
14	UPPER ANCHOR PIN	2	HMB 014c
15	BUSHING	6	HMB 015c
16	THRUST WASHER	2	HMB 016c
17	RUBBER CUSHION ASSY	4	HMB 017
18	SHIM WASHER	4	HMB 018
19	TENSION PIN	2	HMB 019c
20	PIN RETAINING BOLT	2	HMB 020c
21	SET SCREW HEX HEAD	2	HMB 021c
22	ANTI SWAY BLOCK	2	HMB 022c
23	WING FRAME MOUNT BLT	8	HMB 023c
24	HYD RAM	2	HMB 024c
25	HYD PIPE	1	HMB 025c
26	HYD PIPE	1	HMB 026c
27	HYD PIPE	1	HMB 027c
28	HYD PIPE	1	HMB 028c
29	ADAPTOR	2	HMB 029c
30	TEE ADAPTOR	2	HMB 030c

MULTI-BRUSH

Item	Description		Part No
31	ADAPTOR	2	HMB 031c
32	Q/R COUPLING	2	HMB 032c
33	ADAPTOR	2	HMB 033c
34	PIPE CLAMP ASSY	7	HMB 034c
35	SPRING RETAINING COLLAR	1	HMB 035c
36	D-SHACKLE	3	HMB 036c
37	TURNBUCKLE	1	HMB 037c
38	COUNTER BALANCE SPRING	1	HMB 038c
39	BRUSH SECTION BLUE	2	HMB 1800B
40	BRUSH SECTION RED	2	HMB 1800R
41	BRUSH SECTION BLUE	18	HMB 407B
42	BRUSH SECTION RED	18	HMB 407R
43	BRUSH SECTION BLUE	2	HMB 316B
44	BRUSH SECTION RED	2	HMB 316R
45			
46	Hose kit inc items 25-34	1	
47	items 39, 41, 43 =full set	1	
48	items 40, 42, 44 =full set	1	

To order spare parts please email spares@greentek.uk.com or call +44 (0)113 267 7000.

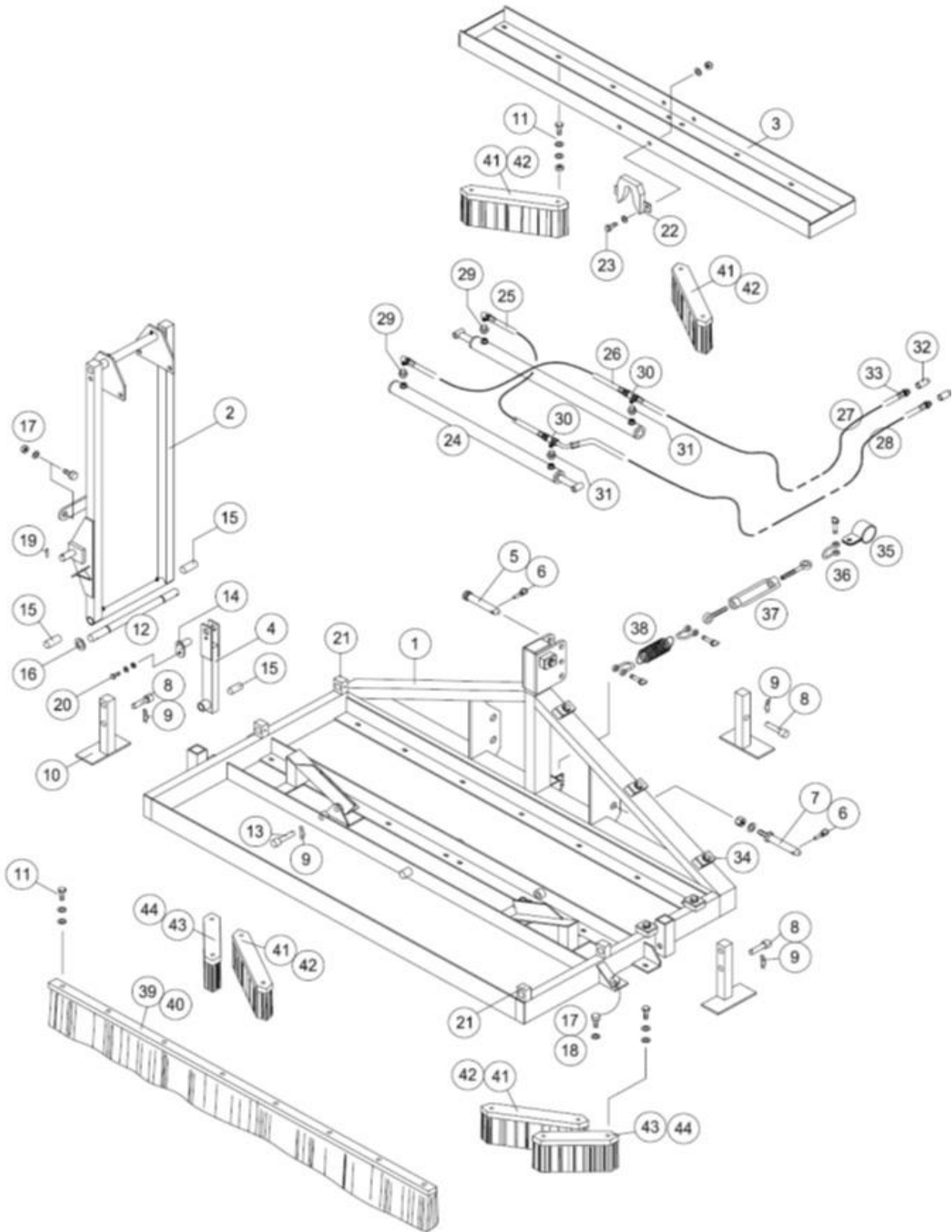
GreenTek[®]

Trusted by the best in the game

Tel: +44 (0)113 267 7000
Email: info@greentek.uk.com
Web: www.greentek.uk.com

MULTI-BRUSH

PARTS DIAGRAM FOR MULTI-BRUSH



GreenTek[®]

Trusted by the best in the game

Tel: +44 (0)113 267 7000
Email: info@greentek.uk.com
Web: www.greentek.uk.com

Declaration of Conformity



Date: 27th April 2022

Machine Model: Multi-Brush

Description: Tractor Mounted Brush

Serial Number:

I hereby certify that the machine detailed hereon conforms to:
UK Supply of Machinery (Safety) Regulations 2008
European Directives 89/392EEC as amended on 91/368EEC –
93/368EEC – 93/68EEC

Signed: 

M. J. Oliver
Product Development Manager

GUARANTEE

All GreenTek products are covered by 5 years parts and labour warranty for commercial use, and 3 months warranty for hire use. This is a genuine 'bumper to bumper' warranty and includes everything except components subject to fair wear and tear such as blades, brushes, belts, bearings, drive splines etc, and damage caused by corrosion, abuse or lack of maintenance.

CONTACT US

For further information, support or advice please contact:

info@greentek.uk.com

+44 (0)113 267 7000